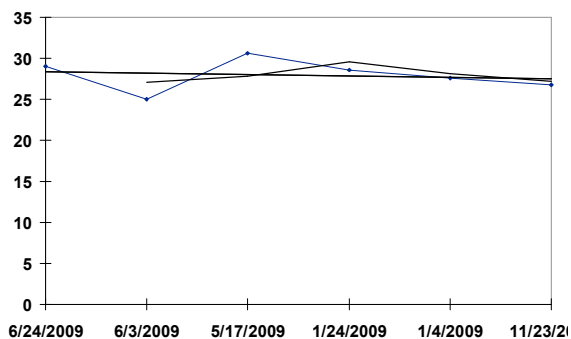


**HV** 09/23/2009 RACE: 1 1000 SURFACE: T Class: 5

**GO STITCH**

133 - AUS CHESTNUT 4YO G, (FRENCH DEPUTY - FAIRY TREE, )

<u>Date</u>	<u>Trk</u>	<u>Surf</u>	<u>Dis (M)</u>	<u>Class</u>	<u>Wt</u>	<u>Fin</u>	<u>Layoff Days</u>	<u>TS</u>
06/24/2009	H	<b>T GF</b>	1200	4	108	10	21	<b>29.020</b>
06/03/2009	H	<b>T G</b>	1200	4	117	8	17	<b>25.042</b>
05/17/2009	S	<b>S GD</b>	1200	4	122	8	113	<b>30.603</b>
01/24/2009	S	<b>T GD</b>	1200	4	125	14	20	<b>28.577</b>
01/04/2009	S	<b>T GD</b>	1600	4	128	13	42	<b>27.599</b>
11/23/2008	S	<b>T GD</b>	1200	4	125	14		<b>26.757</b>

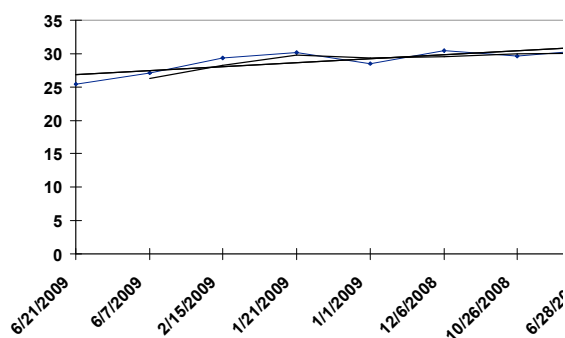


HV 09/23/2009 RACE: 1 1000 SURFACE: T Class: 5

**FAST GO**

129 - IRE BAY 4YO G, (ROYAL APPLAUSE - JESSICA'S DREAM, )

<u>Date</u>	<u>Trk</u>	<u>Surf</u>	<u>Dis (M)</u>	<u>Class</u>	<u>Wt</u>	<u>Fin</u>	<u>Layoff Days</u>	<u>TS</u>
06/21/2009	S	T GF	1000	4	114	4	14	<b>25.411</b>
06/07/2009	S	T GF	1200	4	118	8	112	<b>27.064</b>
02/15/2009	S	T GD	2000	4	120	12	25	<b>29.383</b>
01/21/2009	H	T GD	1650	4	120	10	20	<b>30.136</b>
01/01/2009	S	T GF	1600	4	115	8	26	<b>28.525</b>
12/06/2008	S	T GD	1400	R	127	7	41	<b>30.428</b>
10/26/2008	S	T GD	1400	4	127	14	120	<b>29.587</b>
06/28/2008	S	T YS	1400	GR	125	12		<b>30.550</b>

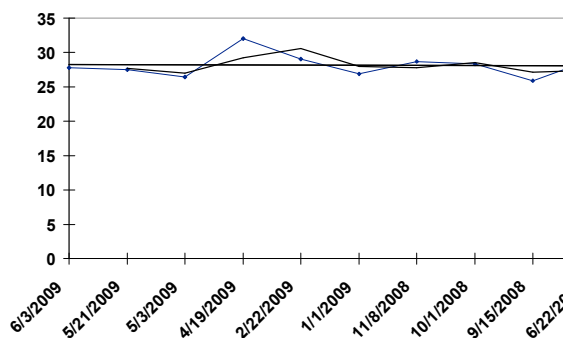


**HV** 09/23/2009 RACE: 1 1000 SURFACE: T Class: 5

**NOT QUITE PERFECT**

132 - AUS BAY 7YO G, (FRAAR - FLYING ESRA, )

<u>Date</u>	<u>Trk</u>	<u>Surf</u>	<u>Dis (M)</u>	<u>Class</u>	<u>Wt</u>	<u>Fin</u>	<u>Layoff Days</u>	<u>TS</u>
06/03/2009	H	T G	1000	5	116	1	13	<b>27.828</b>
05/21/2009	H	T GF	1200	5	127	3	18	<b>27.478</b>
05/03/2009	S	T G	1400	5	128	11	14	<b>26.470</b>
04/19/2009	H	T GY	1000	5	129	4	56	<b>32.043</b>
02/22/2009	S	T GD	1400	5	132	9	52	<b>29.076</b>
01/01/2009	S	T GF	1400	5	133	7	54	<b>26.872</b>
11/08/2008	S	T GD	1400	4	105	11	38	<b>28.711</b>
10/01/2008	S	T GF	1400	4	114	5	16	<b>28.324</b>
09/15/2008	S	T GF	1400	4	116	13	85	<b>25.904</b>
06/22/2008	S	T GD	1400	4	111	9		<b>28.975</b>

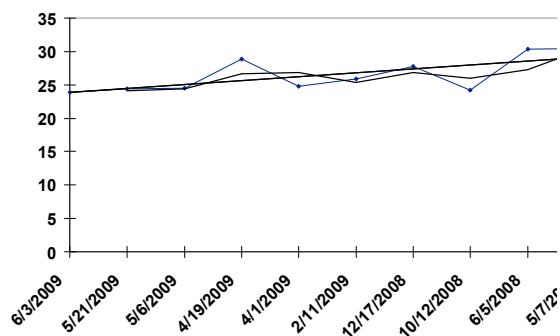


**HV** 09/23/2009 RACE: 1 1000 SURFACE: T Class: 5

**SUPER SPECIAL**

131 - AUS BAY 7YO G, (STRAVINSKY - GROSVENOR GARDENS, )

<u>Date</u>	<u>Trk</u>	<u>Surf</u>	<u>Dis (M)</u>	<u>Class</u>	<u>Wt</u>	<u>Fin</u>	<u>Layoff Days</u>	<u>TS</u>
06/03/2009	H	T G	1000	5	133	8	13	<b>23.873</b>
05/21/2009	H	T GF	1200	4	115	12	15	<b>24.405</b>
05/06/2009	H	T G	1200	4	116	11	17	<b>24.484</b>
04/19/2009	H	T GY	1200	4	116	9	18	<b>28.865</b>
04/01/2009	H	T G	1200	4	115	4	49	<b>24.775</b>
02/11/2009	H	T GD	1000	5	128	1	56	<b>25.906</b>
12/17/2008	H	T GD	1200	5	131	6	66	<b>27.794</b>
10/12/2008	S	T GF	1200	5	130	12	129	<b>24.259</b>
06/05/2008	H	T GD	1200	5	131	6	29	<b>30.380</b>
05/07/2008	H	T GD	1000	5	127	2		<b>30.433</b>

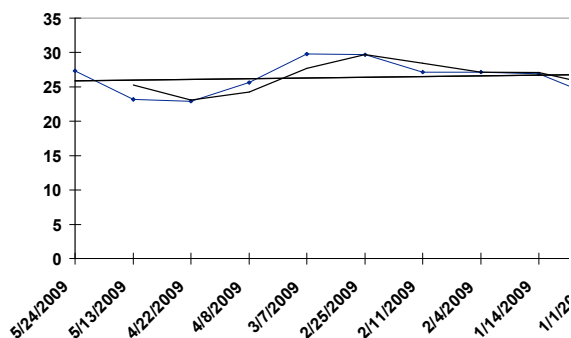


HV 09/23/2009 RACE: 1 1000 SURFACE: T Class: 5

DAILY DOUBLE

130 - AUS BAY 5YO G, (EL MOXIE - GIACONDA, )

Date	Trk	Surf	Dis (M)	Class	Wt	Fin	Layoff Days	TS
05/24/2009	S	T YS	1200	4	112	10	11	27.327
05/13/2009	H	T GF	1000	4	115	6	21	23.207
04/22/2009	H	T G	1000	4	119	9	14	22.947
04/08/2009	H	T G	1000	4	120	5	32	25.595
03/07/2009	S	T GY	1400	4	120	12	10	29.763
02/25/2009	H	T GD	1200	4	122	10	14	29.637
02/11/2009	H	T GD	1200	4	120	7	7	27.170
02/04/2009	H	T GD	1200	4	120	2	21	27.191
01/14/2009	H	T GD	1200	4	122	7	13	26.865
01/01/2009	S	T GF	1200	4	123	9		23.448

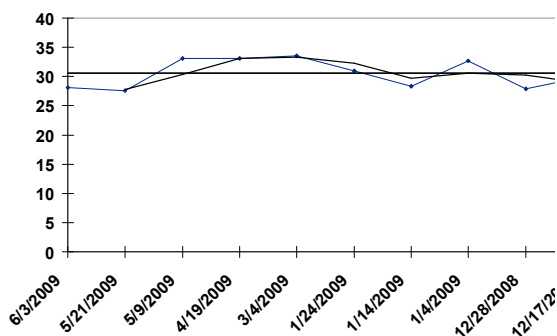


HV 09/23/2009 RACE: 1 1000 SURFACE: T Class: 5

PERFECT ATHLETE

129 - NZ BAY 7YO G, (VOLKSRAAD - EARNOUT, )

Date	Trk	Surf	Dis (M)	Class	Wt	Fin	Layoff Days	TS
06/03/2009	H	T G	1000	5	121	3	13	28.104
05/21/2009	H	T GF	1200	5	127	4	12	27.563
05/09/2009	S	S GD	1200	5	125	5	20	33.149
04/19/2009	H	T GY	1000	5	123	2	46	33.089
03/04/2009	S	S GD	1200	5	121	1	39	33.484
01/24/2009	S	T GD	1400	5	120	14	10	31.026
01/14/2009	H	T GD	1000	5	121	5	10	28.318
01/04/2009	S	S FT	1200	5	119	2	7	32.715
12/28/2008	S	T GF	1200	5	119	5	11	27.859
12/17/2008	H	T GD	1200	5	123	10		29.915

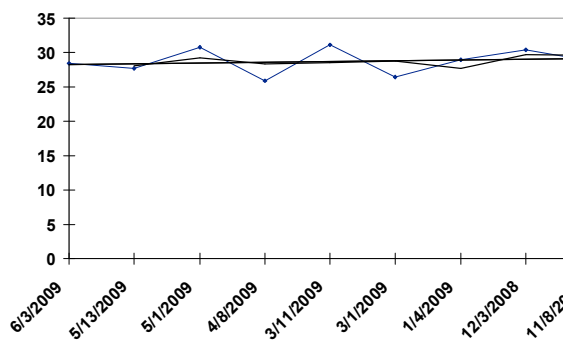


HV 09/23/2009 RACE: 1 1000 SURFACE: T Class: 5

**CHAIN WIN**

128 - AUS BAY 4YO G, (CATBIRD - PETA'S PRIDE, )

<u>Date</u>	<u>Trk</u>	<u>Surf</u>	<u>Dis (M)</u>	<u>Class</u>	<u>Wt</u>	<u>Fin</u>	<u>Layoff Days</u>	<u>TS</u>
06/03/2009	H	T G	1000	5	132	10	21	<b>28.408</b>
05/13/2009	H	T GF	1000	4	114	7	12	<b>27.676</b>
05/01/2009	S	S GD	1200	4	114	6	23	<b>30.721</b>
04/08/2009	H	T G	1000	4	117	7	28	<b>25.849</b>
03/11/2009	H	T GD	1200	4	119	12	10	<b>31.137</b>
03/01/2009	S	T GD	1000	4	118	6	56	<b>26.387</b>
01/04/2009	S	T GD	1000	4	124	8	32	<b>28.917</b>
12/03/2008	H	T GD	1000	4	127	10	25	<b>30.439</b>
11/08/2008	S	T GD	1000	4	120	10		<b>28.765</b>

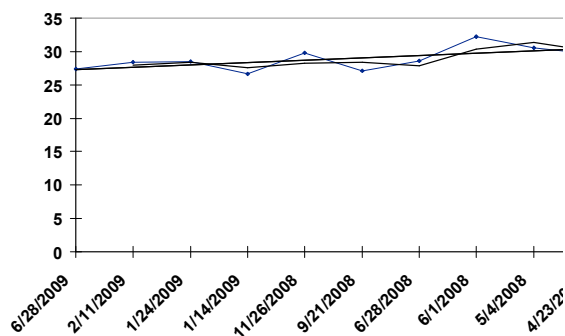


**HV** 09/23/2009 RACE: 1 1000 SURFACE: T Class: 5

**TAKE IT EASY**

124 - NZ BAY 6YO G, (SPECTATORIAL - PEARL OF POMPEII, )

<u>Date</u>	<u>Trk</u>	<u>Surf</u>	<u>Dis (M)</u>	<u>Class</u>	<u>Wt</u>	<u>Fin</u>	<u>Layoff Days</u>	<u>TS</u>
06/28/2009	S	T S	1200	5	127	12	137	<b>27.408</b>
02/11/2009	H	T GD	1000	5	123	9	18	<b>28.412</b>
01/24/2009	S	T GD	1200	4	112	9	10	<b>28.491</b>
01/14/2009	H	T GD	1200	4	118	9	49	<b>26.607</b>
11/26/2008	H	T GD	1000	4	115	12	66	<b>29.768</b>
09/21/2008	S	T GF	1000	4	115	4	85	<b>27.117</b>
06/28/2008	S	T YS	1000	4	119	8	27	<b>28.558</b>
06/01/2008	S	T GY	1200	4	119	4	28	<b>32.207</b>
05/04/2008	S	T GD	1200	4	123	6	11	<b>30.588</b>
04/23/2008	H	T GD	1200	4	122	11		<b>29.646</b>

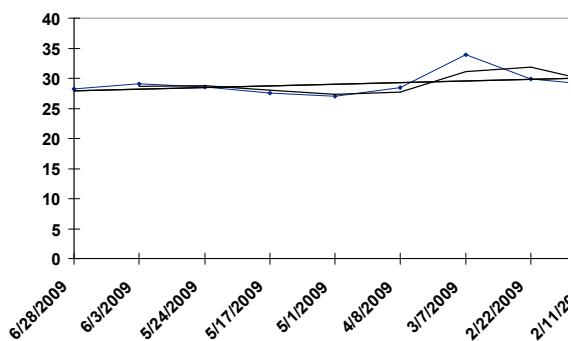


HV 09/23/2009 RACE: 1 1000 SURFACE: T Class: 5

**OPTIC KING**

119 - IRE BAY 7YO G, (DANEHILL - BOLSHAYA, )

<u>Date</u>	<u>Trk</u>	<u>Surf</u>	<u>Dis (M)</u>	<u>Class</u>	<u>Wt</u>	<u>Fin</u>	<u>Layoff Days</u>	<u>TS</u>
06/28/2009	S	T S	1200	5	122	10	25	<b>28.208</b>
06/03/2009	H	T G	1000	5	120	2	10	<b>29.044</b>
05/24/2009	S	T YS	1200	5	122	5	7	<b>28.571</b>
05/17/2009	S	T GF	1400	5	116	7	16	<b>27.492</b>
05/01/2009	S	T GF	1200	5	121	10	23	<b>27.059</b>
04/08/2009	H	T G	1200	5	118	4	32	<b>28.420</b>
03/07/2009	S	T GY	1400	5	119	10	13	<b>33.873</b>
02/22/2009	S	T GD	1400	5	121	5	11	<b>29.891</b>
02/11/2009	H	T GD	1000	5	121	11		<b>28.828</b>

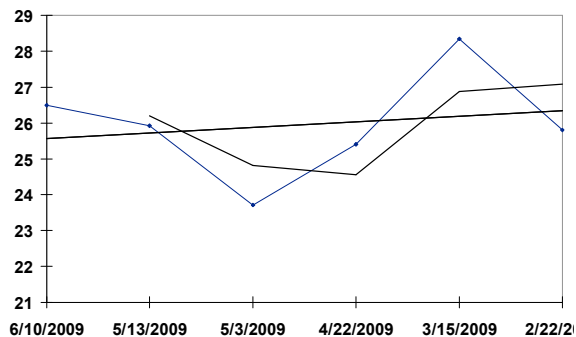


HV 09/23/2009 RACE: 1 1000 SURFACE: T Class: 5

**MAGIC PRACTITIONER**

118 - AUS BAY 4YO C, (Perugino - Lara Tycoon, )

<u>Date</u>	<u>Trk</u>	<u>Surf</u>	<u>Dis (M)</u>	<u>Class</u>	<u>Wt</u>	<u>Fin</u>	<u>Layoff Days</u>	<u>TS</u>
06/10/2009	H	T GF	1650	5	129	10	28	<b>26.494</b>
05/13/2009	H	T GF	1000	4	115	11	10	<b>25.922</b>
05/03/2009	S	T G	1200	4	116	8	11	<b>23.711</b>
04/22/2009	H	T G	1000	4	119	12	38	<b>25.407</b>
03/15/2009	S	T GD	1200	4	125	14	21	<b>28.343</b>
02/22/2009	S	T GD	1200	4	123	14		<b>25.805</b>

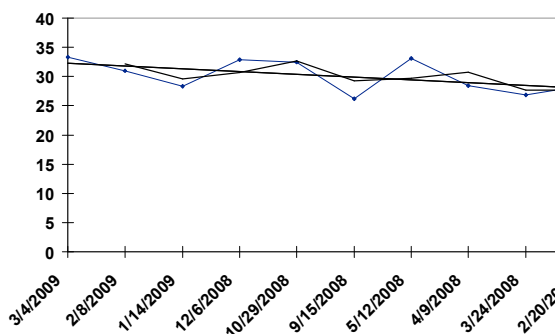


HV 09/23/2009 RACE: 1 1000 SURFACE: T Class: 5

**BLUE SAINT**

118 - NZ GREY 6YO G, (MY HALO - ICEY BLUE, )

Date	Trk	Surf	Dis (M)	Class	Wt	Fin	Layoff Days	TS
03/04/2009	S	S GD	1200	5	112	10	24	33.364
02/08/2009	S	S GD	1200	5	110	2	25	30.936
01/14/2009	H	T GD	1000	5	120	10	39	28.324
12/06/2008	S	S GD	1200	5	121	10	38	32.904
10/29/2008	S	S GD	1200	5	119	2	44	32.421
09/15/2008	S	T GF	1200	5	121	11	126	26.211
05/12/2008	S	S FT	1200	5	125	8	33	33.138
04/09/2008	H	T GD	1000	4	110	12	16	28.423
03/24/2008	S	T GD	1000	4	115	13	33	26.873
02/20/2008	H	T GD	1000	4	119	10		28.458

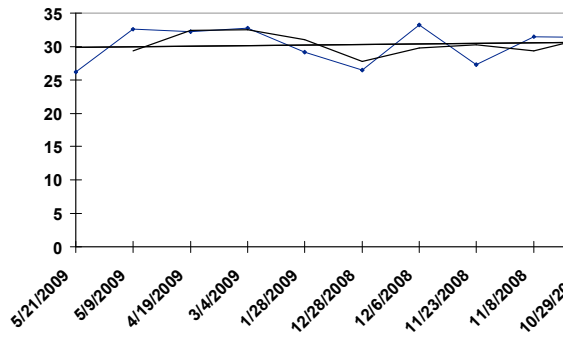


**HV** 09/23/2009 RACE: 1 1000 SURFACE: T Class: 5

**ALIVE AND KICKING**

111 - AUS BAY 5YO G, (ELUSIVE QUALITY - DRAMA OF LIFE, )

<u>Date</u>	<u>Trk</u>	<u>Surf</u>	<u>Dis (M)</u>	<u>Class</u>	<u>Wt</u>	<u>Fin</u>	<u>Layoff Days</u>	<u>TS</u>
05/21/2009	H	<b>T G</b>	1650	5	114	11	12	<b>26.150</b>
05/09/2009	S	<b>S GD</b>	1200	5	118	11	20	<b>32.578</b>
04/19/2009	H	<b>T GY</b>	1000	5	122	8	46	<b>32.179</b>
03/04/2009	S	<b>S GD</b>	1200	5	126	9	35	<b>32.784</b>
01/28/2009	S	<b>T GD</b>	1200	5	126	13	31	<b>29.149</b>
12/28/2008	S	<b>T GF</b>	1200	5	126	3	22	<b>26.460</b>
12/06/2008	S	<b>S GD</b>	1200	5	130	6	13	<b>33.198</b>
11/23/2008	S	<b>S GD</b>	1650	5	130	11	15	<b>27.277</b>
11/08/2008	S	<b>T GD</b>	1400	5	130	6	10	<b>31.458</b>
10/29/2008	S	<b>S GD</b>	1200	5	132	5		<b>31.412</b>

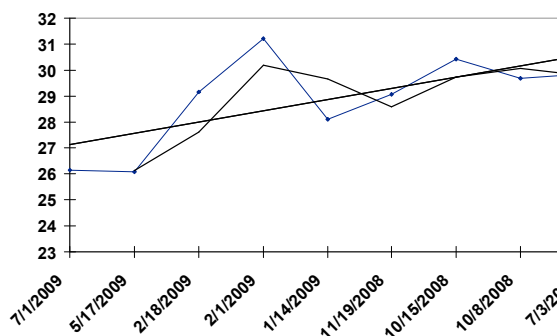


HV 09/23/2009 RACE: 1 1000 SURFACE: T Class: 5

HAPPY SUNDAY

115 - AUS BAY 7YO G, (DANEHILL - TREGURRIAN, )

Date	Trk	Surf	Dis (M)	Class	Wt	Fin	Layoff Days	TS
07/01/2009	S	T GF	1400	5	122	10	45	26.161
05/17/2009	S	T GF	1400	5	114	13	88	26.074
02/18/2009	H	T GD	1650	5	125	10	17	29.150
02/01/2009	S	T GD	1400	5	127	7	18	31.203
01/14/2009	H	T GD	1000	5	131	11	56	28.117
11/19/2008	H	T GD	1000	5	132	12	35	29.053
10/15/2008	H	T GD	1000	4	114	6	7	30.429
10/08/2008	H	T GD	1200	4	114	8	97	29.691
07/03/2008	H	T GD	1200	4	120	9		29.849

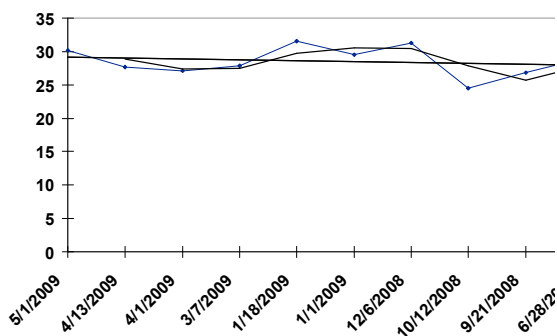


HV 09/23/2009 RACE: 1 1000 SURFACE: T Class: 5

SCOOT DA LOOT

133 - NZ BAY 7YO G, (D'CASH - VIVARCHEE,)

Date	Trk	Surf	Dis (M)	Class	Wt	Fin	Layoff Days	TS
05/01/2009	S	S GD	1200	4	116	12	18	30.207
04/13/2009	S	S GD	1200	4	120	9	12	27.630
04/01/2009	H	T G	1200	4S	124	10	25	27.112
03/07/2009	S	T GY	1000	4	124	13	48	27.841
01/18/2009	S	T GD	1400	4	129	14	17	31.569
01/01/2009	S	T GF	1600	4	125	10	26	29.550
12/06/2008	S	T GD	1400	4	123	4	55	31.260
10/12/2008	S	T GF	1200	4	133	7	21	24.522
09/21/2008	S	T GF	1000	4	132	6	85	26.835
06/28/2008	S	T YS	1000	4	133	2		28.937

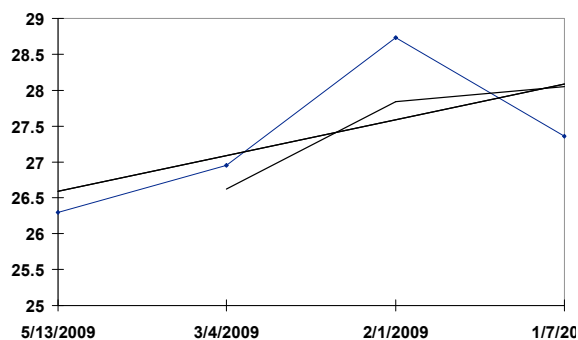


**HV** 09/23/2009 RACE: 2 1650 SURFACE: T Class: 5

**CENTURY MOLLY**

130 - NZ BAY 4YO G, (KILIMANJARO - STARLET,)

<u>Date</u>	<u>Trk</u>	<u>Surf</u>	<u>Dis (M)</u>	<u>Class</u>	<u>Wt</u>	<u>Fin</u>	<u>Layoff Days</u>	<u>TS</u>
05/13/2009	H	<b>T G</b>	1650	4S	117	10	70	<b>26.292</b>
03/04/2009	S	<b>S GD</b>	1650	4	123	14	31	<b>26.949</b>
02/01/2009	S	<b>T GD</b>	1400	4	125	11	25	<b>28.733</b>
01/07/2009	H	<b>T GD</b>	1200	4	125	11		<b>27.358</b>



HV

09/23/2009

RACE: 2

1650

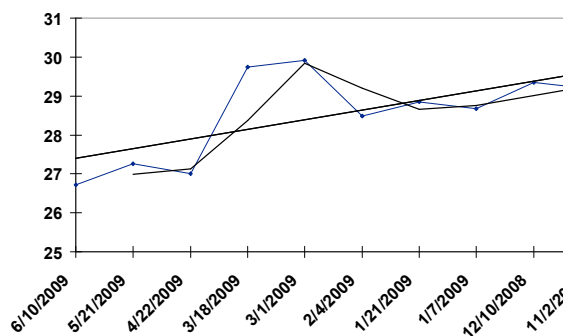
SURFACE: T

Class: 5

**GOLDEN OPPORTUNITY**

133 - NZ BAY 5YO G, (GOLAN - GALORE, )

<u>Date</u>	<u>Trk</u>	<u>Surf</u>	<u>Dis (M)</u>	<u>Class</u>	<u>Wt</u>	<u>Fin</u>	<u>Layoff Days</u>	<u>TS</u>
06/10/2009	H	T GF	1650	5	133	7	20	<b>26.724</b>
05/21/2009	H	T G	1650	5	131	3	29	<b>27.264</b>
04/22/2009	H	T G	1650	5	132	3	35	<b>27.010</b>
03/18/2009	H	T GD	1650	5	133	7	17	<b>29.745</b>
03/01/2009	S	T GY	1600	5	133	9	25	<b>29.920</b>
02/04/2009	H	T GD	1800	4	120	9	14	<b>28.482</b>
01/21/2009	H	T GD	1650	4	109	11	14	<b>28.849</b>
01/07/2009	H	T GD	1800	4	112	10	28	<b>28.675</b>
12/10/2008	H	T GD	1650	5	129	1	38	<b>29.351</b>
11/02/2008	S	T GD	1400	5	131	11		<b>29.182</b>

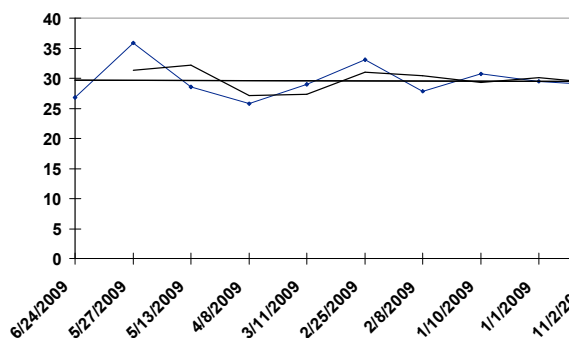


HV 09/23/2009 RACE: 2 1650 SURFACE: T Class: 5

**SURE GAIN**

131 - NZ BAY 5YO G, (VIKING RULER - LATIN LASS, )

Date	Trk	Surf	Dis (M)	Class	Wt	Fin	Layoff Days	TS
06/24/2009	H	T GF	1650	5	126	9	28	26.797
05/27/2009	H	T GY	1800	5	127	1	14	35.835
05/13/2009	H	T G	2200	5	125	3	35	28.597
04/08/2009	H	T G	2200	5	120	1	28	25.732
03/11/2009	H	T GD	1800	5	122	6	14	28.962
02/25/2009	H	T GD	1800	5	126	4	17	33.102
02/08/2009	S	T GD	1600	5	125	7	29	27.824
01/10/2009	S	S GD	1800	5	125	11	9	30.773
01/01/2009	S	T GF	1600	5	128	7	60	29.532
11/02/2008	S	T GD	1400	5	131	10		28.879

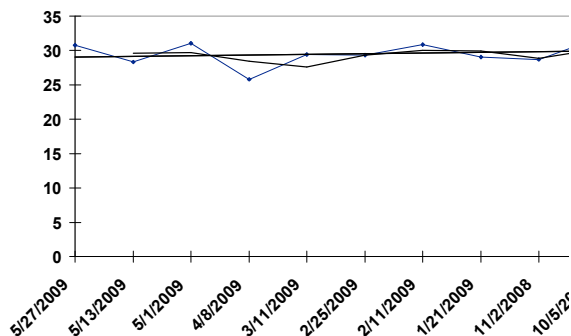


HV 09/23/2009 RACE: 2 1650 SURFACE: T Class: 5

**DECENT FELLOW**

130 - NZ BAY 6YO G, (GALILEO - STREET STAR, )

Date	Trk	Surf	Dis (M)	Class	Wt	Fin	Layoff Days	TS
05/27/2009	H	T GY	1800	5	125	9	14	30.757
05/13/2009	H	T G	2200	5	123	1	12	28.335
05/01/2009	S	T GF	1800	5	125	5	23	31.016
04/08/2009	H	T G	2200	5	128	7	28	25.777
03/11/2009	H	T GD	1800	5	126	4	14	29.397
02/25/2009	H	T GD	1800	5	127	2	14	29.292
02/11/2009	H	T GD	2200	5	124	2	21	30.856
01/21/2009	H	T GD	1650	5	126	4	80	29.057
11/02/2008	S	T GD	1400	5	130	12	28	28.686
10/05/2008	S	T GY	1800	5	131	12		31.767

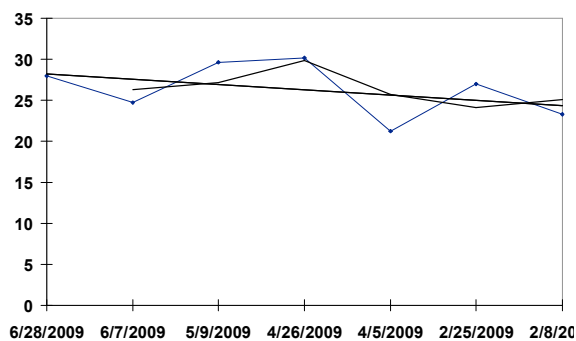


HV 09/23/2009 RACE: 2 1650 SURFACE: T Class: 5

SMART CODE

130 - AUS BROWN 5YO C, (BITE THE BULLET - DANAIR,)

Date	Trk	Surf	Dis (M)	Class	Wt	Fin	Layoff Days	TS
06/28/2009	S	S WS	1200	4	112	8	21	27.960
06/07/2009	S	T GF	1600	4	115	10	29	24.728
05/09/2009	S	T G	1600	4	116	5	13	29.609
04/26/2009	S	T GY	1400	4	121	6	21	30.180
04/05/2009	S	T G	1000	4	118	8	39	21.232
02/25/2009	H	T GD	1200	4	123	9	17	26.980
02/08/2009	S	T GD	1000	4	121	10		23.259

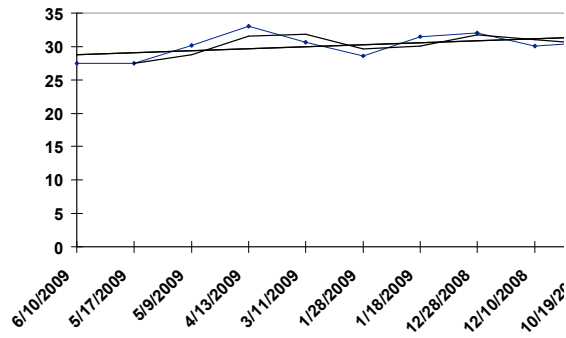


HV 09/23/2009 RACE: 2 1650 SURFACE: T Class: 5

FRAMES DEPOT

126 - USA GREY 7YO G, (DUMAANI - MISS COUGAR, )

Date	Trk	Surf	Dis (M)	Class	Wt	Fin	Layoff Days	TS
06/10/2009	H	T GF	1650	5	121	1	24	27.511
05/17/2009	S	T GF	1400	5	117	3	8	27.453
05/09/2009	S	T G	1600	5	120	9	26	30.134
04/13/2009	S	T GD	1600	5	123	14	33	33.035
03/11/2009	H	T GD	1800	5	125	9	42	30.679
01/28/2009	S	T GD	1600	5	126	8	10	28.626
01/18/2009	S	T GD	1600	5	125	3	21	31.482
12/28/2008	S	T GF	1800	5	127	11	18	31.989
12/10/2008	H	T GD	1650	5	121	12	52	30.070
10/19/2008	H	T GD	1650	5	127	10		30.642

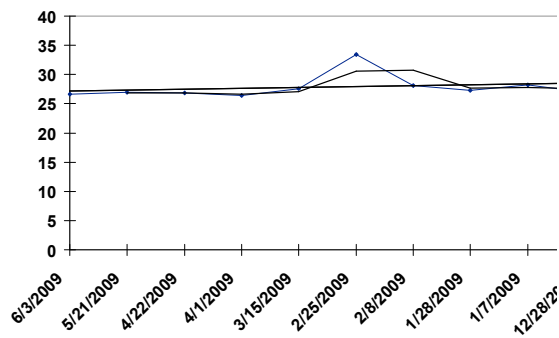


HV 09/23/2009 RACE: 2 1650 SURFACE: T Class: 5

**JOYFUL YEARS**

123 - AUS BROWN 7YO G, (EL MOXIE - PRIVATE GEM, )

Date	Trk	Surf	Dis (M)	Class	Wt	Fin	Layoff Days	TS
06/03/2009	H	T G	1650	5	125	3	13	26.667
05/21/2009	H	T G	1650	5	125	2	29	26.980
04/22/2009	H	T G	1650	5	125	4	21	26.808
04/01/2009	H	T G	1650	5	124	3	17	26.453
03/15/2009	S	T GD	1600	5	126	6	18	27.624
02/25/2009	H	T GD	1800	5	130	6	17	33.432
02/08/2009	S	T GD	1600	5	130	9	11	28.071
01/28/2009	S	T GD	1600	5	122	6	21	27.291
01/07/2009	H	T GD	1650	5	133	11	10	28.272
12/28/2008	S	S GD	1650	4	113	8		26.915

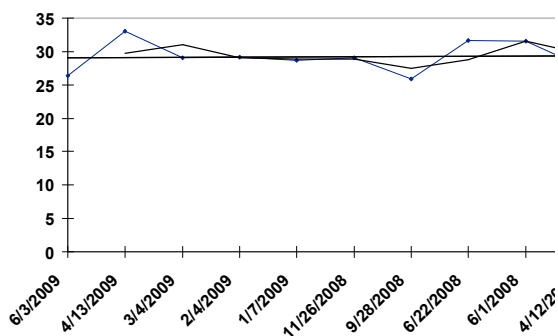


HV 09/23/2009 RACE: 2 1650 SURFACE: T Class: 5

**FORTUNE GALLOP**

123 - SAF BAY 5YO G, (AL MUFTI - NIGHT SPOT,)

Date	Trk	Surf	Dis (M)	Class	Wt	Fin	Layoff Days	TS
06/03/2009	H	T G	1650	5	127	11	51	26.404
04/13/2009	S	T GD	1600	5	129	8	40	33.052
03/04/2009	S	S GD	1650	5	120	10	28	29.016
02/04/2009	H	T GD	1650	5	130	7	28	29.149
01/07/2009	H	T GD	1650	5	130	4	42	28.681
11/26/2008	H	T GD	1650	5	127	1	59	29.063
09/28/2008	S	T GF	1400	5	121	12	98	25.923
06/22/2008	S	T GD	1400	5	130	7	21	31.628
06/01/2008	S	T GY	1600	4	115	9	50	31.594
04/12/2008	S	T GD	1600	4	115	14		27.635

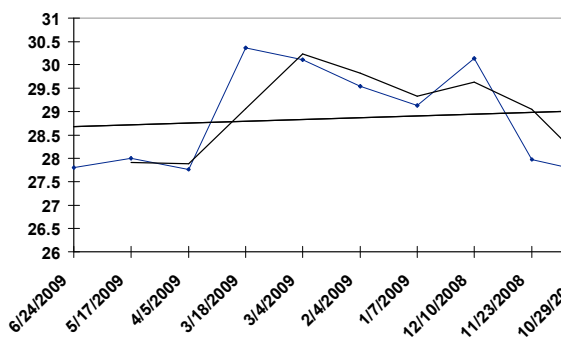


HV 09/23/2009 RACE: 2 1650 SURFACE: T Class: 5

**BAUHINIA**

119 - IRE BAY 8YO G, (DAGGERS DRAWN - RAVENSDALE ROSE, )

Date	Trk	Surf	Dis (M)	Class	Wt	Fin	Layoff Days	TS
06/24/2009	H	T GF	1650	5	125	12	38	27.799
05/17/2009	S	S GD	1650	5	120	13	42	28.009
04/05/2009	S	S GD	1650	5	121	14	18	27.766
03/18/2009	H	T GD	1650	5	114	1	14	30.361
03/04/2009	S	S GD	1650	5	110	1	28	30.112
02/04/2009	H	T GD	1650	5	115	12	28	29.536
01/07/2009	H	T GD	1650	5	115	8	28	29.126
12/10/2008	H	T GD	1650	5	121	7	17	30.137
11/23/2008	S	S GD	1650	5	120	14	25	27.971
10/29/2008	S	S GD	1650	5	123	14		27.691

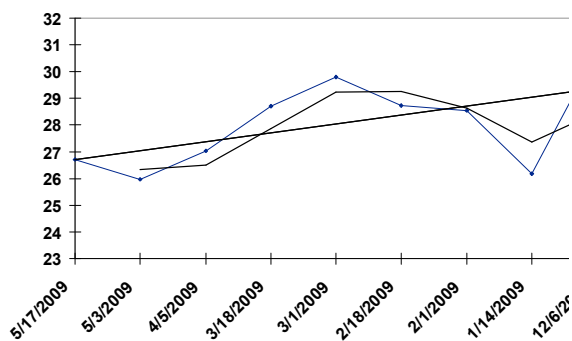


HV 09/23/2009 RACE: 2 1650 SURFACE: T Class: 5

EPEE DE HUA

113 - AUS BROWN 4YO G, (SNAADDEE - FLASH FAIRY,)

Date	Trk	Surf	Dis (M)	Class	Wt	Fin	Layoff Days	TS
05/17/2009	S	S GD	1650	5	123	14	14	26.713
05/03/2009	S	T G	1400	5	126	12	28	25.975
04/05/2009	S	S GD	1650	5	133	12	18	27.025
03/18/2009	H	T GD	1650	4	111	8	17	28.703
03/01/2009	S	T GY	1400	4S	117	11	11	29.796
02/18/2009	H	T GD	1650	4	121	9	17	28.719
02/01/2009	S	T GD	1400	4	113	9	18	28.542
01/14/2009	H	T GD	1200	4	124	12	39	26.175
12/06/2008	S	S GD	1200	4	125	8		30.770

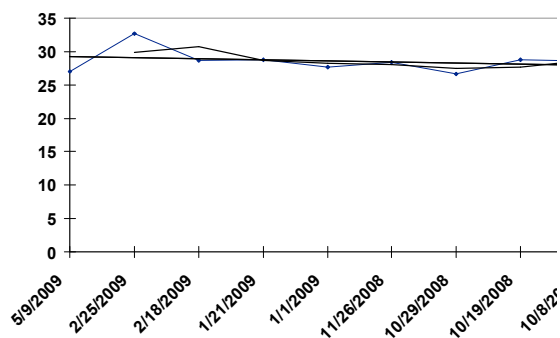


HV 09/23/2009 RACE: 2 1650 SURFACE: T Class: 5

**RISING WIN**

111 - AUS BAY 10YO G, (LANGFUHR - BRIDAL PARTY, )

<u>Date</u>	<u>Trk</u>	<u>Surf</u>	<u>Dis (M)</u>	<u>Class</u>	<u>Wt</u>	<u>Fin</u>	<u>Layoff Days</u>	<u>TS</u>
05/09/2009	S	T G	1600	5	113	14	73	<b>27.036</b>
02/25/2009	H	T GD	1800	5	117	8	7	<b>32.687</b>
02/18/2009	H	T GD	1650	5	120	11	28	<b>28.722</b>
01/21/2009	H	T GD	1650	5	122	7	20	<b>28.734</b>
01/01/2009	S	T GF	1600	5	124	9	36	<b>27.646</b>
11/26/2008	H	T GD	1650	5	118	5	28	<b>28.437</b>
10/29/2008	S	S GD	1650	5	124	12	10	<b>26.601</b>
10/19/2008	H	T GD	1650	5	118	1	11	<b>28.784</b>
10/08/2008	H	T GD	1650	5	119	9		<b>28.622</b>

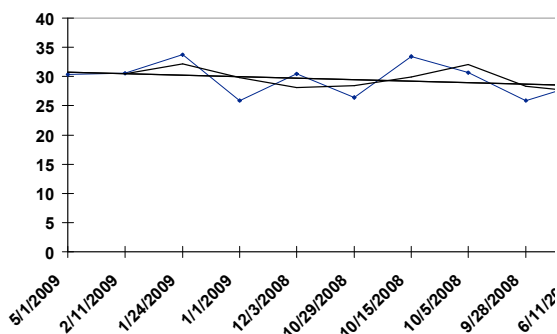


**HV** 09/23/2009 RACE: 2 1650 SURFACE: T Class: 5

**VITALITY CHAMP**

111 - AUS BAY 8YO G, (DANEHILL - SIERRA FINCH, )

<u>Date</u>	<u>Trk</u>	<u>Surf</u>	<u>Dis (M)</u>	<u>Class</u>	<u>Wt</u>	<u>Fin</u>	<u>Layoff Days</u>	<u>TS</u>
05/01/2009	S	T GF	1800	5	114	11	79	<b>30.348</b>
02/11/2009	H	T GD	2200	5	107	10	18	<b>30.580</b>
01/24/2009	S	T GD	1800	5	116	11	23	<b>33.760</b>
01/01/2009	S	T GF	1400	5	116	9	29	<b>25.893</b>
12/03/2008	H	T GD	2200	5	116	11	35	<b>30.411</b>
10/29/2008	S	S GD	1650	5	114	9	14	<b>26.371</b>
10/15/2008	H	T GD	1800	5	111	1	10	<b>33.428</b>
10/05/2008	S	T GY	1800	5	109	9	7	<b>30.684</b>
09/28/2008	S	T GF	1400	5	111	8	109	<b>25.892</b>
06/11/2008	H	T GD	1650	5	113	9		<b>28.886</b>

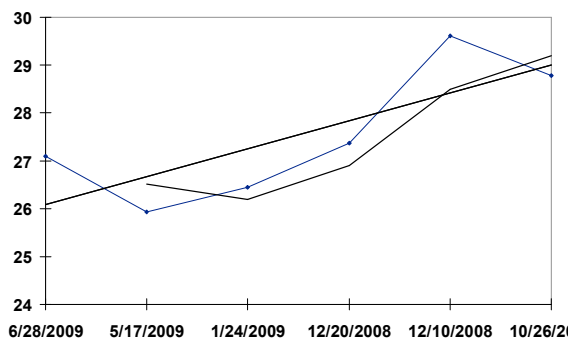


**HV** 09/23/2009 RACE: 2 1650 SURFACE: T Class: 5

**MYSTERIOUS**

119 - AUS BAY 4YO G, (GIANT'S CAUSEWAY - BUMPS, )

<u>Date</u>	<u>Trk</u>	<u>Surf</u>	<u>Dis (M)</u>	<u>Class</u>	<u>Wt</u>	<u>Fin</u>	<u>Layoff Days</u>	<u>TS</u>
06/28/2009	S	T S	1200	5	129	13	42	<b>27.093</b>
05/17/2009	S	T GF	1400	4	111	12	113	<b>25.937</b>
01/24/2009	S	S FT	1650	4	119	13	35	<b>26.443</b>
12/20/2008	S	T GF	1600	4	120	13	10	<b>27.375</b>
12/10/2008	H	T GD	1650	4	125	12	45	<b>29.616</b>
10/26/2008	S	T GD	1400	4	125	13		<b>28.778</b>

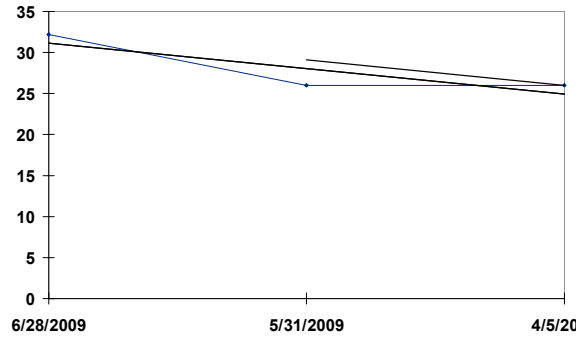


**HV** 09/23/2009 RACE: 3 1200 SURFACE: T Class: 4

**KARBRIDGE**

133 - 4YO ,(-,)

<u>Date</u>	<u>Trk</u>	<u>Surf</u>	<u>Dis (M)</u>	<u>Class</u>	<u>Wt</u>	<u>Fin</u>	<u>Layoff Days</u>	<u>TS</u>
06/28/2009	S	<b>S WS</b>	1200	3	116	12	28	<b>32.185</b>
05/31/2009	S	<b>T G</b>	1200	3	122	10	56	<b>26.035</b>
04/05/2009	S	<b>T G</b>	1000	3	122	12		<b>25.986</b>

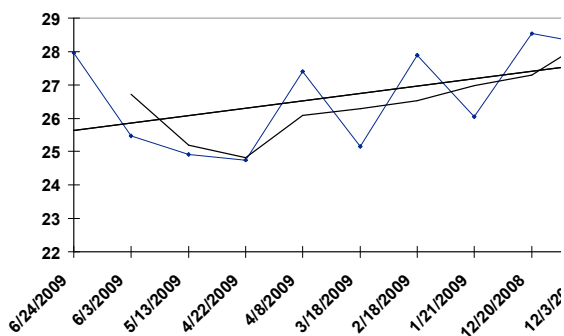


HV 09/23/2009 RACE: 3 1200 SURFACE: T Class: 4

ASIAN CITRUS

132 - AUS BAY 6YO G, (CATBIRD - SMYTZER'S ROYLANI, )

Date	Trk	Surf	Dis (M)	Class	Wt	Fin	Layoff Days	TS
06/24/2009	H	T GF	1200	4	131	3	21	27.964
06/03/2009	H	T G	1200	4	132	6	21	25.467
05/13/2009	H	T GF	1200	4	124	1	21	24.906
04/22/2009	H	T G	1200	4	118	1	14	24.742
04/08/2009	H	T G	1200	4	117	2	21	27.412
03/18/2009	H	T GD	1000	4	120	4	28	25.162
02/18/2009	H	T GD	1000	4	118	6	28	27.889
01/21/2009	H	T GD	1000	4	123	4	32	26.047
12/20/2008	S	T GD	1000	4	121	9	17	28.527
12/03/2008	H	T GD	1000	4	126	8		28.215

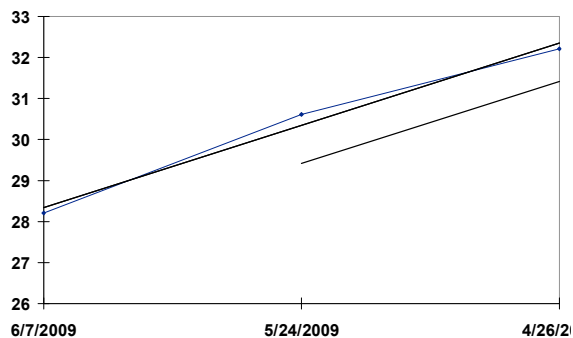


**HV** 09/23/2009 RACE: 3 1200 SURFACE: T Class: 4

**MASTER RIO**

131 - NZ CHESTNUT 4YO G, (Captain Rio - Search, )

<u>Date</u>	<u>Trk</u>	<u>Surf</u>	<u>Dis (M)</u>	<u>Class</u>	<u>Wt</u>	<u>Fin</u>	<u>Layoff Days</u>	<u>TS</u>
06/07/2009	S	T GF	1200	4	131	6	14	<b>28.213</b>
05/24/2009	S	T YS	1200	4	126	1	28	<b>30.613</b>
04/26/2009	S	T GY	1200	4	121	7		<b>32.217</b>

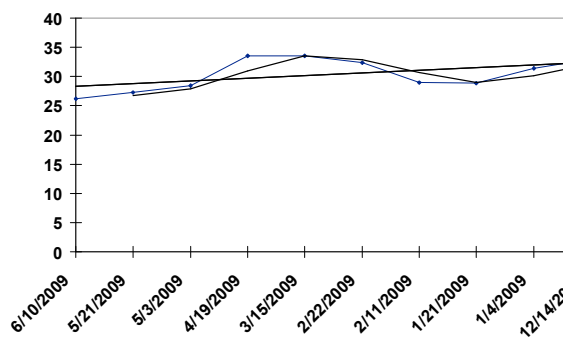


**HV** 09/23/2009 RACE: 3 1200 SURFACE: T Class: 4

**CHINA HERO**

129 - AUS CHESTNUT 6YO G, (KING CHARLEMAGNE - MINSKY LASS,)

<u>Date</u>	<u>Trk</u>	<u>Surf</u>	<u>Dis (M)</u>	<u>Class</u>	<u>Wt</u>	<u>Fin</u>	<u>Layoff Days</u>	<u>TS</u>
06/10/2009	H	T GF	1000	4	128	3	20	<b>26.255</b>
05/21/2009	H	T GF	1200	4	122	3	18	<b>27.290</b>
05/03/2009	S	T G	1400	4	123	4	14	<b>28.478</b>
04/19/2009	H	T GY	1200	4	121	3	35	<b>33.558</b>
03/15/2009	S	T GD	1400	4	133	8	21	<b>33.510</b>
02/22/2009	S	T GD	1600	3	114	10	11	<b>32.340</b>
02/11/2009	H	T GD	1650	3	107	8	21	<b>29.018</b>
01/21/2009	H	T GD	1650	3	114	4	17	<b>28.875</b>
01/04/2009	S	T GD	1400	3	104	2	21	<b>31.354</b>
12/14/2008	S	T GD	1400	3	117	11		<b>33.019</b>

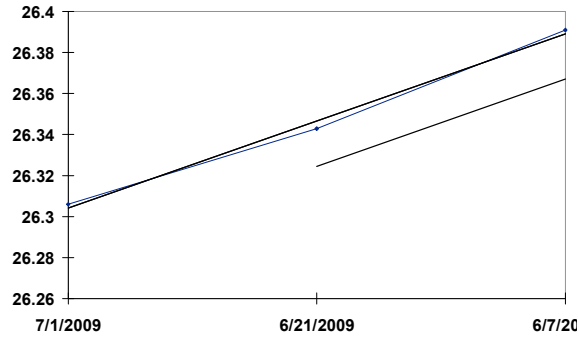


**HV** 09/23/2009 RACE: 3 1200 SURFACE: T Class: 4

**CHEERFUL CITY**

126 - NZ BAY 5YO G, (DANASINGA - ALL MUSIC, )

<u>Date</u>	<u>Trk</u>	<u>Surf</u>	<u>Dis (M)</u>	<u>Class</u>	<u>Wt</u>	<u>Fin</u>	<u>Layoff Days</u>	<u>TS</u>
07/01/2009	S	T GF	1200	4	123	3	10	<b>26.306</b>
06/21/2009	S	T GF	1000	4	123	3	14	<b>26.343</b>
06/07/2009	S	T GF	1000	4	126	5		<b>26.391</b>

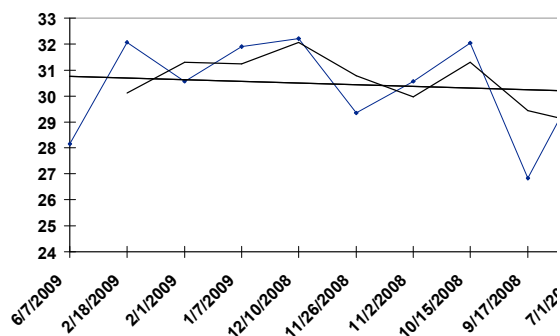


HV 09/23/2009 RACE: 3 1200 SURFACE: T Class: 4

**CLASSA SUPREME**

125 - NZ CHESTNUT 8YO G, (JUSTICE PREVAILS - MADAM FUJI, )

Date	Trk	Surf	Dis (M)	Class	Wt	Fin	Layoff Days	TS
06/07/2009	S	T GF	1200	4	127	5	109	28.153
02/18/2009	H	T GD	1200	4	128	5	17	32.061
02/01/2009	S	T GD	1200	4	122	6	25	30.559
01/07/2009	H	T GD	1650	4	129	12	28	31.905
12/10/2008	H	T GD	1650	4	131	3	14	32.210
11/26/2008	H	T GD	1650	4	130	4	24	29.344
11/02/2008	S	T GD	1200	4	124	1	18	30.573
10/15/2008	H	T GD	1650	4	126	9	28	32.056
09/17/2008	H	T GF	1650	4	126	8	78	26.851
07/01/2008	S	T GY	1200	4	131	9		30.968

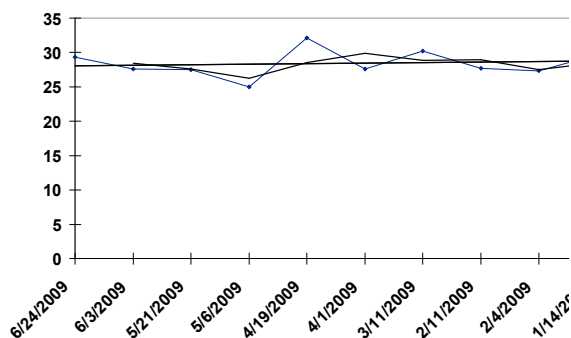


**HV** 09/23/2009 RACE: 3 1200 SURFACE: T Class: 4

**MARVELLOUS**

126 - AUS CHESTNUT 6YO G, (LANGFUHR - LADY MARITA, )

<u>Date</u>	<u>Trk</u>	<u>Surf</u>	<u>Dis (M)</u>	<u>Class</u>	<u>Wt</u>	<u>Fin</u>	<u>Layoff Days</u>	<u>TS</u>
06/24/2009	H	T GF	1200	4	128	9	21	<b>29.325</b>
06/03/2009	H	T G	1200	4	128	6	13	<b>27.587</b>
05/21/2009	H	T GF	1200	4	127	2	15	<b>27.554</b>
05/06/2009	H	T G	1200	4	127	9	17	<b>24.962</b>
04/19/2009	H	T GY	1200	4	127	2	18	<b>32.133</b>
04/01/2009	H	T G	1200	4S	126	2	21	<b>27.564</b>
03/11/2009	H	T GD	1200	4	127	3	28	<b>30.249</b>
02/11/2009	H	T GD	1200	4S	129	7	7	<b>27.678</b>
02/04/2009	H	T GD	1200	4	129	9	21	<b>27.291</b>
01/14/2009	H	T GD	1200	4	118	8		<b>29.704</b>

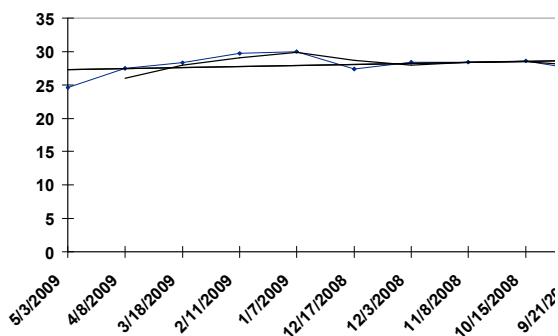


HV 09/23/2009 RACE: 3 1200 SURFACE: T Class: 4

HAPPEE GIFT

121 - NZ BROWN 5YO G, (TOWKAY - MAKE UP, )

Date	Trk	Surf	Dis (M)	Class	Wt	Fin	Layoff Days	TS
05/03/2009	S	T G	1000	4	114	8	25	24.579
04/08/2009	H	T G	1200	4	122	3	21	27.463
03/18/2009	H	T GD	1000	4	123	3	35	28.340
02/11/2009	H	T GD	1200	4	115	3	35	29.748
01/07/2009	H	T GD	1200	4	119	4	21	30.010
12/17/2008	H	T GD	1200	4	113	1	14	27.354
12/03/2008	H	T GD	1000	4	119	4	25	28.446
11/08/2008	S	T GD	1400	4	119	7	24	28.411
10/15/2008	H	T GD	1000	4	116	5	24	28.592
09/21/2008	S	T GF	1000	4	121	7		27.181

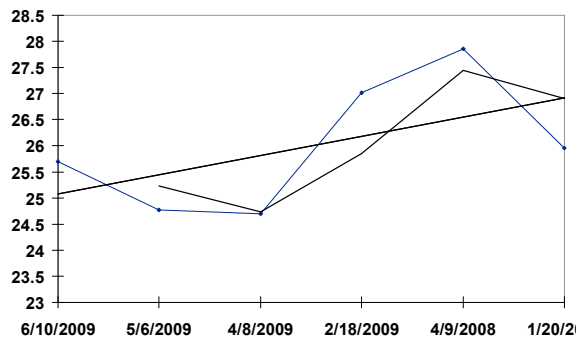


**HV** 09/23/2009 RACE: 3 1200 SURFACE: T Class: 4

**SUGAR ON TOP**

118 - NZ BAY 7YO G, (VOLKSRAAD - MISS OPERA, )

<u>Date</u>	<u>Trk</u>	<u>Surf</u>	<u>Dis (M)</u>	<u>Class</u>	<u>Wt</u>	<u>Fin</u>	<u>Layoff Days</u>	<u>TS</u>
06/10/2009	H	<b>T GF</b>	1000	4	126	7	35	<b>25.696</b>
05/06/2009	H	<b>T G</b>	1200	3	111	11	28	<b>24.770</b>
04/08/2009	H	<b>T G</b>	1200	3	111	9	49	<b>24.695</b>
02/18/2009	H	<b>T GD</b>	1200	3	112	12	315	<b>27.014</b>
04/09/2008	H	<b>T GD</b>	1200	3	130	12	80	<b>27.860</b>
01/20/2008	S	<b>T GD</b>	1200	1	111	14		<b>25.958</b>

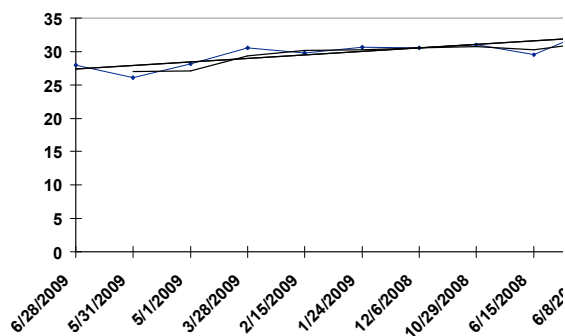


HV 09/23/2009 RACE: 3 1200 SURFACE: T Class: 4

TATTENHALL DELIGHT

120 - NZ BAY 7YO G, (GREEN PERFUME - REGAL SERVANT,)

Date	Trk	Surf	Dis (M)	Class	Wt	Fin	Layoff Days	TS
06/28/2009	S	S WS	1200	4	120	4	28	27.973
05/31/2009	S	S GD	1650	4	114	14	30	26.131
05/01/2009	S	S GD	1200	4	120	4	34	28.099
03/28/2009	S	S GD	1200	4	122	4	41	30.532
02/15/2009	S	S GD	1200	4	120	11	22	29.847
01/24/2009	S	S FT	1200	4	119	2	49	30.595
12/06/2008	S	S GD	1200	4	119	7	38	30.524
10/29/2008	S	S GD	1200	5	132	1	136	31.009
06/15/2008	S	S GD	1650	5	131	3	7	29.528
06/08/2008	S	S WF	1200	5	131	3		33.177

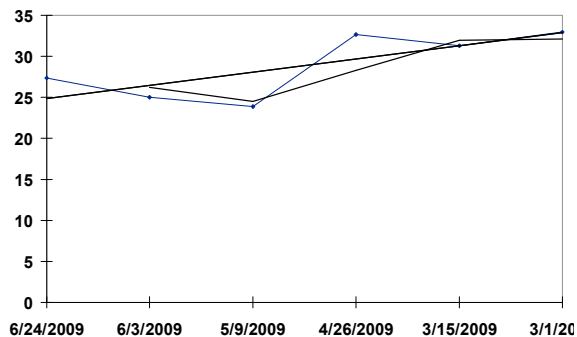


**HV** 09/23/2009 RACE: 3 1200 SURFACE: T Class: 4

**FAIRWOOD CROWN**

115 - AUS BROWN 5YO G, (BEAUTIFUL CROWN - FRAISCHE, )

<u>Date</u>	<u>Trk</u>	<u>Surf</u>	<u>Dis (M)</u>	<u>Class</u>	<u>Wt</u>	<u>Fin</u>	<u>Layoff Days</u>	<u>TS</u>
06/24/2009	H	T GF	1200	4	119	12	21	<b>27.356</b>
06/03/2009	H	T G	1200	4	120	4	25	<b>25.037</b>
05/09/2009	S	T G	1200	4	121	5	13	<b>23.918</b>
04/26/2009	S	T GY	1400	4	123	13	42	<b>32.646</b>
03/15/2009	S	T GD	1400	4	125	5	14	<b>31.333</b>
03/01/2009	S	T GY	1400	4	126	8		<b>32.991</b>

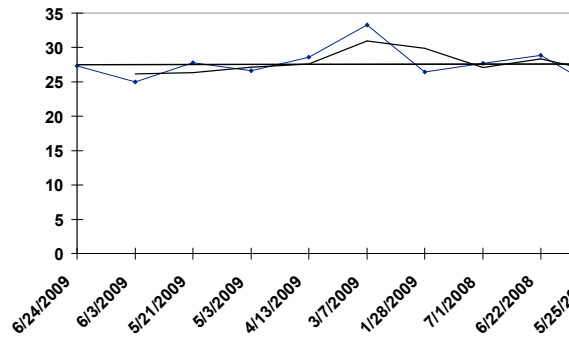


HV 09/23/2009 RACE: 3 1200 SURFACE: T Class: 4

**OWNERS LAD**

118 - NZ BAY 7YO G, (VOLKSRAAD - AMYTHEST,)

Date	Trk	Surf	Dis (M)	Class	Wt	Fin	Layoff Days	TS
06/24/2009	H	T GF	1200	4	117	11	21	27.330
06/03/2009	H	T G	1200	4	115	2	13	25.023
05/21/2009	H	T GF	1200	5	130	1	18	27.743
05/03/2009	S	T G	1400	5	129	6	20	26.628
04/13/2009	S	T GF	1400	5	127	2	37	28.577
03/07/2009	S	T GY	1400	5	131	14	38	33.310
01/28/2009	S	T GD	1200	5	133	11	211	26.466
07/01/2008	S	T GY	1200	4	113	7	9	27.698
06/22/2008	S	T GD	1200	4	120	6	28	28.901
05/25/2008	S	T GF	1200	4	122	3		23.916

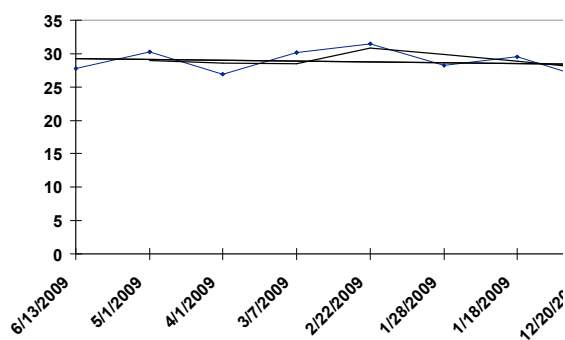


HV 09/23/2009 RACE: 3 1200 SURFACE: T Class: 4

**KING POWER**

114 - AUS BAY 5YO G, (MULL OF KINTYRE - BEAUTY SLEEP, )

Date	Trk	Surf	Dis (M)	Class	Wt	Fin	Layoff Days	TS
06/13/2009	S	S GD	1200	4	122	9	43	27.729
05/01/2009	S	S GD	1200	4	122	8	30	30.241
04/01/2009	H	T G	1200	4S	120	12	25	26.885
03/07/2009	S	T GY	1400	4	128	8	13	30.194
02/22/2009	S	T GD	1600	3	113	14	25	31.512
01/28/2009	S	T GD	1400	3B	111	13	10	28.187
01/18/2009	S	T GD	1600	3	117	14	29	29.495
12/20/2008	S	T GF	1400	3	118	14		26.071

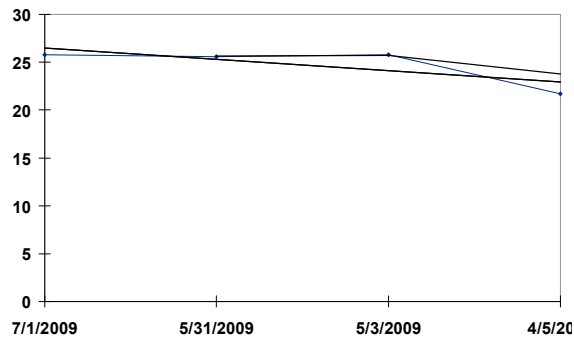


**HV** 09/23/2009 RACE: 3 1200 SURFACE: T Class: 4

**SOLAR UP**

119 - AUS BROWN 4YO G, (JOHANNESBURG - WHOLE LOTTA ROSIE, )

<u>Date</u>	<u>Trk</u>	<u>Surf</u>	<u>Dis (M)</u>	<u>Class</u>	<u>Wt</u>	<u>Fin</u>	<u>Layoff Days</u>	<u>TS</u>
07/01/2009	S	T GF	1400	4	120	12	31	<b>25.774</b>
05/31/2009	S	T G	1400	4	121	4	28	<b>25.598</b>
05/03/2009	S	T G	1200	4	117	9	28	<b>25.815</b>
04/05/2009	S	T G	1000	4	116	7		<b>21.702</b>

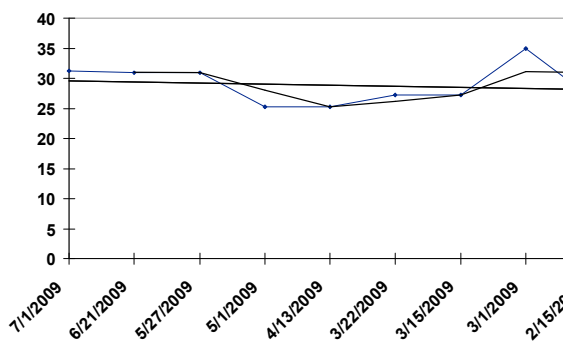


HV 09/23/2009 RACE: 4 1800 SURFACE: T Class: 4

**GALLANT MASTER**

133 - AUS BAY / BROW 4YO G, (ENCOSTA DE LAGO - JODIE FASTER, )

Date	Trk	Surf	Dis (M)	Class	Wt	Fin	Layoff Days	TS
07/01/2009	S	T GF	1800	4	133	4	10	31.213
06/21/2009	S	S GD	1800	4	129	7	25	30.900
05/27/2009	H	T GY	1650	4	127	1	26	30.886
05/01/2009	S	T GF	1600	4	127	5	18	25.225
04/13/2009	S	T GF	1600	4	121	1	22	25.240
03/22/2009	S	T GD	1600	4	119	4	7	27.208
03/15/2009	S	T GD	1600	4	119	2	14	27.181
03/01/2009	S	T GY	1800	4	116	5	14	34.994
02/15/2009	S	S GD	1650	4	112	1		26.848

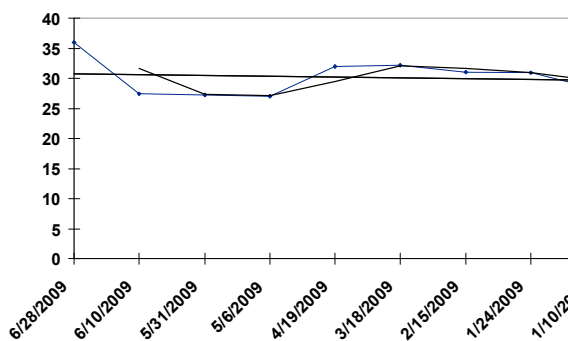


HV 09/23/2009 RACE: 4 1800 SURFACE: T Class: 4

DASH AHEAD

132 - IRE CHESTNUT 8YO G , (BAHHARE - MADAM BAILEYS, )

Date	Trk	Surf	Dis (M)	Class	Wt	Fin	Layoff Days	TS
06/28/2009	S	T S	2000	3	110	4	18	35.955
06/10/2009	H	T GF	1800	3	117	10	10	27.418
05/31/2009	S	T G	2000	3	118	10	25	27.191
05/06/2009	H	T G	2200	3	114	3	17	26.978
04/19/2009	H	T GY	1800	3	124	5	32	31.913
03/18/2009	H	T GD	2200	3	125	5	31	32.155
02/15/2009	S	T GD	1800	3	125	9	22	31.044
01/24/2009	S	T GD	2000	3	128	6	14	30.882
01/10/2009	S	S GD	1650	3	120	9		28.219

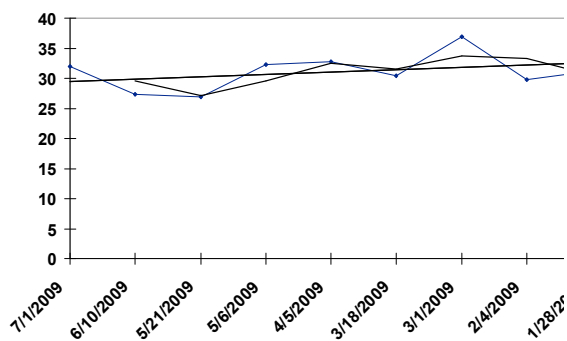


HV 09/23/2009 RACE: 4 1800 SURFACE: T Class: 4

EVER KING

131 - IRE BAY 7YO G, (DANEHILL DANCER - BRIEF FAIRY, )

Date	Trk	Surf	Dis (M)	Class	Wt	Fin	Layoff Days	TS
07/01/2009	S	T GF	1800	4	126	1	21	31.955
06/10/2009	H	T GF	1800	4	119	8	20	27.291
05/21/2009	H	T GF	1650	4	119	3	15	26.913
05/06/2009	H	T G	1800	4	128	7	31	32.239
04/05/2009	S	T G	1800	4	129	7	18	32.771
03/18/2009	H	T GD	1650	4	128	6	17	30.412
03/01/2009	S	T GY	1800	4	125	3	25	36.915
02/04/2009	H	T GD	1800	4	122	11	7	29.781
01/28/2009	S	T GD	1800	4B	132	7		31.270

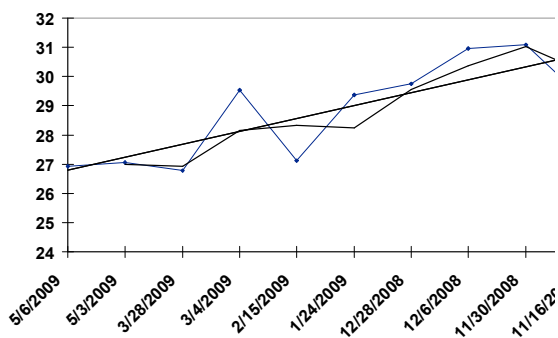


HV 09/23/2009 RACE: 4 1800 SURFACE: T Class: 4

FANTASTIC DANCER

131 - AUS BAY 6YO G, (FANTASTIC LIGHT - LAMOUR, )

Date	Trk	Surf	Dis (M)	Class	Wt	Fin	Layoff Days	TS
05/06/2009	H	T G	1800	4	131	2	3	26.932
05/03/2009	S	S GD	1650	4	124	1	36	27.059
03/28/2009	S	S GD	1800	4	120	4	24	26.789
03/04/2009	S	S GD	1650	4	127	5	17	29.548
02/15/2009	S	S GD	1650	4	129	11	22	27.114
01/24/2009	S	S FT	1650	4	128	3	27	29.360
12/28/2008	S	S GD	1650	4	130	5	22	29.754
12/06/2008	S	S GD	1800	4	127	7	6	30.962
11/30/2008	S	T GF	1800	4	133	6	14	31.077
11/16/2008	S	T GD	1800	3	113	11		29.254

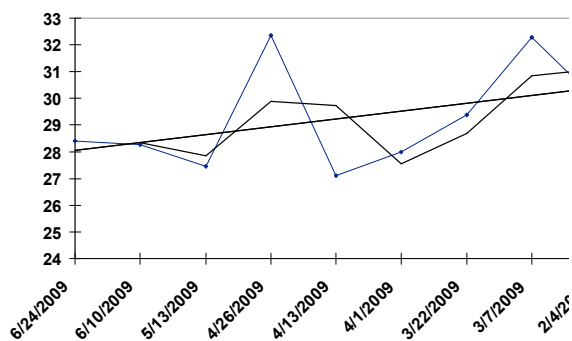


HV 09/23/2009 RACE: 4 1800 SURFACE: T Class: 4

DASHING THUNDER

128 - IRE CHESTNUT 9YO G , (PEINTRE CELEBRE - HAPPY LANDING, )

Date	Trk	Surf	Dis (M)	Class	Wt	Fin	Layoff Days	TS
06/24/2009	H	T GF	1650	4S	131	4	14	28.409
06/10/2009	H	T GF	1650	4	130	7	28	28.260
05/13/2009	H	T GF	1650	3	114	12	17	27.458
04/26/2009	S	T GY	1800	3	118	5	13	32.345
04/13/2009	S	T GF	1400	4	127	2	12	27.118
04/01/2009	H	T G	1650	4	133	3	10	27.989
03/22/2009	S	T GD	1400	3	111	11	15	29.381
03/07/2009	S	T GY	1800	3	115	6	31	32.290
02/04/2009	H	T GD	1800	3	112	12		29.908

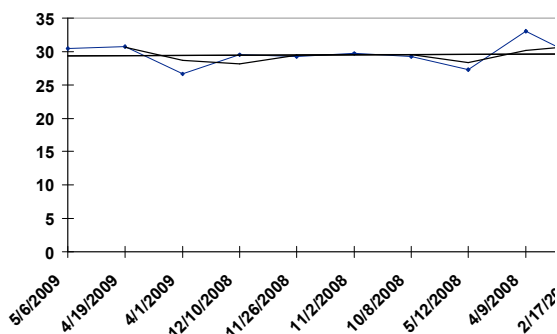


HV 09/23/2009 RACE: 4 1800 SURFACE: T Class: 4

**SUPER SURPRISE**

130 - AUS GREY 6YO G, (FUSAICHI PEGASUS - MISS MARBLES, )

Date	Trk	Surf	Dis (M)	Class	Wt	Fin	Layoff Days	TS
05/06/2009	H	T G	1800	4	131	8	17	30.480
04/19/2009	H	T GY	1800	4	133	11	18	30.712
04/01/2009	H	T G	1650	4	132	8	112	26.671
12/10/2008	H	T GD	1800	4	133	7	14	29.518
11/26/2008	H	T GD	1800	4	126	1	24	29.255
11/02/2008	S	T GD	1800	4	128	10	25	29.721
10/08/2008	H	T GD	1800	4	128	8	149	29.262
05/12/2008	S	T GF	1800	4	126	14	33	27.330
04/09/2008	H	T GD	1800	4	124	3	52	33.061
02/17/2008	S	T GD	2000	4	126	5		28.813

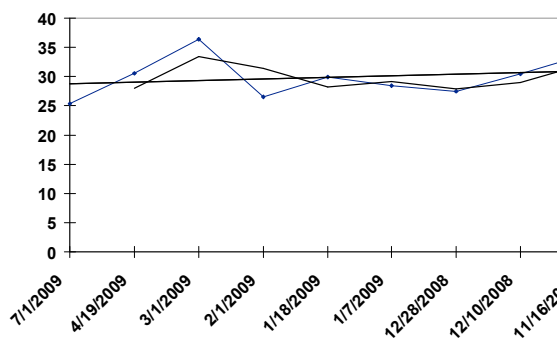


HV 09/23/2009 RACE: 4 1800 SURFACE: T Class: 4

**LUCKY MONEY**

121 - NZ BAY 8YO G, (MARJU - KAPPADIOS,)

Date	Trk	Surf	Dis (M)	Class	Wt	Fin	Layoff Days	TS
07/01/2009	S	T GF	1600	4	127	14	73	25.387
04/19/2009	H	T GY	1800	4	130	12	49	30.550
03/01/2009	S	T GY	1800	4	130	12	28	36.355
02/01/2009	S	S GD	1650	3	110	13	14	26.500
01/18/2009	S	T GD	1600	3	112	7	11	29.873
01/07/2009	H	T GD	1650	3	111	6	10	28.411
12/28/2008	S	T GF	1600	3	116	12	18	27.467
12/10/2008	H	T GD	2200	3	116	9	24	30.422
11/16/2008	S	T GD	1800	3	120	11		33.774

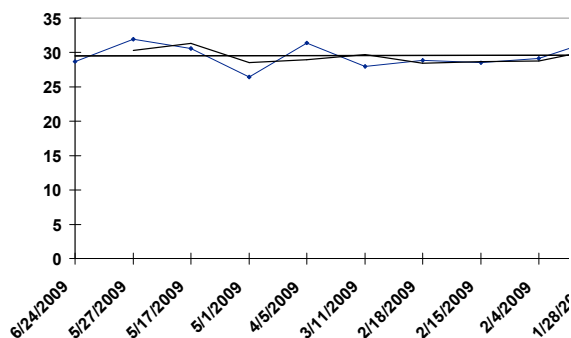


**HV** 09/23/2009 RACE: 4 1800 SURFACE: T Class: 4

**BATURO**

123 - AUS BAY 6YO G, (PERUGINO - FLOWERS FOR RORY, )

<u>Date</u>	<u>Trk</u>	<u>Surf</u>	<u>Dis (M)</u>	<u>Class</u>	<u>Wt</u>	<u>Fin</u>	<u>Layoff Days</u>	<u>TS</u>
06/24/2009	H	T GF	1650	4	117	7	28	<b>28.677</b>
05/27/2009	H	T GY	2200	4	114	11	10	<b>31.936</b>
05/17/2009	S	T GF	1800	4	113	2	16	<b>30.621</b>
05/01/2009	S	T GF	2000	4	113	3	26	<b>26.459</b>
04/05/2009	S	T G	1800	4	113	3	25	<b>31.384</b>
03/11/2009	H	T GD	2200	4	115	11	21	<b>27.965</b>
02/18/2009	H	T GD	1650	4	121	10	3	<b>28.892</b>
02/15/2009	S	T GD	2000	4	116	2	11	<b>28.483</b>
02/04/2009	H	T GD	1800	4	125	3	7	<b>29.130</b>
01/28/2009	S	T GD	1600	4B	111	3		<b>31.902</b>

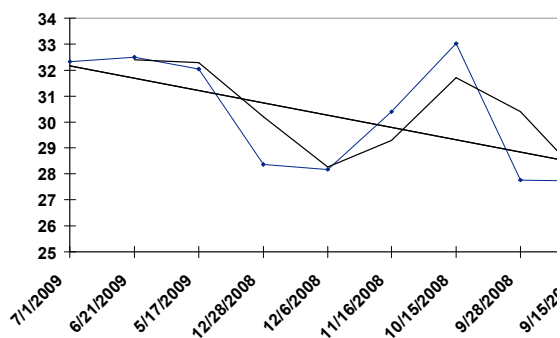


HV 09/23/2009 RACE: 4 1800 SURFACE: T Class: 4

**JOLLY WONGCHOY**

123 - USA BAY / BROW 5YO G, (BELONG TO ME - MOONLIGHT SLEW,)

Date	Trk	Surf	Dis (M)	Class	Wt	Fin	Layoff Days	TS
07/01/2009	S	T GF	1800	4	120	13	10	32.324
06/21/2009	S	S GD	1800	4	119	3	35	32.494
05/17/2009	S	T GF	1800	4	122	8	140	32.045
12/28/2008	S	S GD	1650	4	123	11	22	28.375
12/06/2008	S	S GD	1800	4	121	3	20	28.170
11/16/2008	S	T GD	2000	4	127	3	32	30.405
10/15/2008	H	T GD	1650	4	124	6	17	33.027
09/28/2008	S	T GF	1400	4	127	8	13	27.777
09/15/2008	S	T GF	1400	4	127	6		27.719

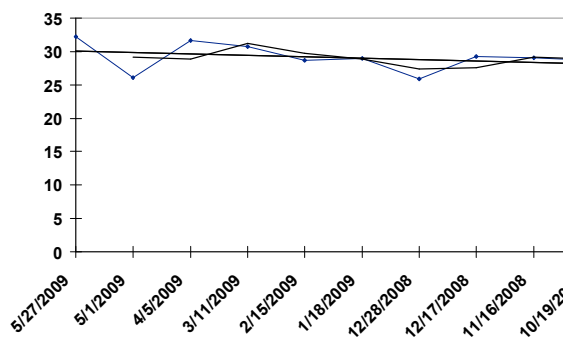


HV 09/23/2009 RACE: 4 1800 SURFACE: T Class: 4

**SAMBUOYANT**

120 - AUS BAY 8YO G, (FLYING SPUR - NOVINKA, )

Date	Trk	Surf	Dis (M)	Class	Wt	Fin	Layoff Days	TS
05/27/2009	H	T GY	2200	4	120	7	26	32.175
05/01/2009	S	T GF	2000	4	117	14	26	26.102
04/05/2009	S	T G	1800	4	126	8	25	31.622
03/11/2009	H	T GD	2200	4	127	4	24	30.744
02/15/2009	S	T GD	2000	4	129	10	28	28.697
01/18/2009	S	T GD	2000	4	120	1	21	28.957
12/28/2008	S	T GF	2000	4	123	11	11	25.908
12/17/2008	H	T GD	1650	4	125	9	31	29.225
11/16/2008	S	T GD	2000	4	131	6	28	29.090
10/19/2008	H	T GD	2200	4	132	4		28.707

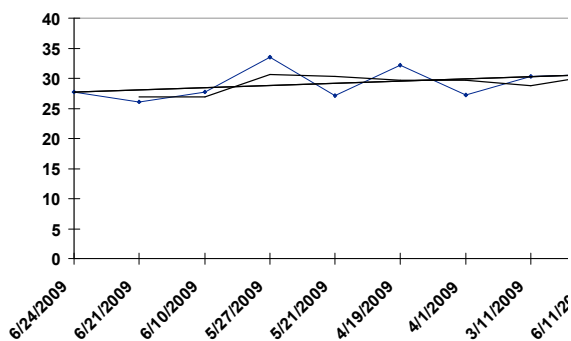


HV 09/23/2009 RACE: 4 1800 SURFACE: T Class: 4

WONG'S FAVOURITE

117 - USA BAY 7YO G, (SADLER'S WELLS - SAGANECA, )

Date	Trk	Surf	Dis (M)	Class	Wt	Fin	Layoff Days	TS
06/24/2009	H	T GF	1650	4S	114	3	3	27.752
06/21/2009	S	T GF	1600	4	121	8	11	26.045
06/10/2009	H	T GF	1650	4	115	4	14	27.700
05/27/2009	H	T GY	2200	4	122	4	6	33.516
05/21/2009	H	T GF	1650	4	124	6	32	27.080
04/19/2009	H	T GY	1800	4	128	10	18	32.209
04/01/2009	H	T G	1650	4	123	11	21	27.167
03/11/2009	H	T GD	1650	4	123	8	273	30.282
06/11/2008	H	T GD	1650	4	128	9		30.662

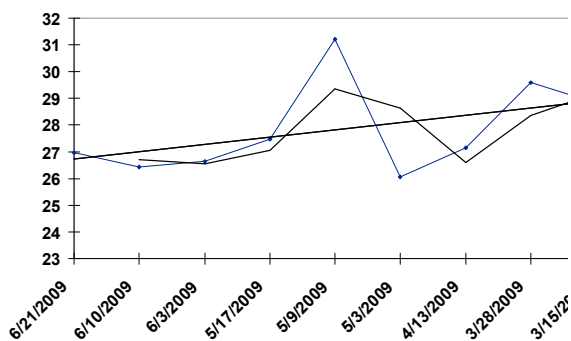


HV 09/23/2009 RACE: 4 1800 SURFACE: T Class: 4

GRAND GENERAL

113 - AUS BROWN 5YO G, (PERUGINO - SNOW ANGEL,)

Date	Trk	Surf	Dis (M)	Class	Wt	Fin	Layoff Days	TS
06/21/2009	S	T GF	1800	5	126	3	11	26.973
06/10/2009	H	T GF	1650	5	126	4	7	26.443
06/03/2009	H	T G	1650	5	126	9	17	26.652
05/17/2009	S	S GD	1650	5	133	3	8	27.477
05/09/2009	S	S GD	1200	5	126	4	6	31.219
05/03/2009	S	T G	1400	4	115	5	20	26.064
04/13/2009	S	T GF	1600	4	111	9	16	27.149
03/28/2009	S	T GY	1400	4	109	9	13	29.590
03/15/2009	S	T GD	1400	4	115	8		28.812

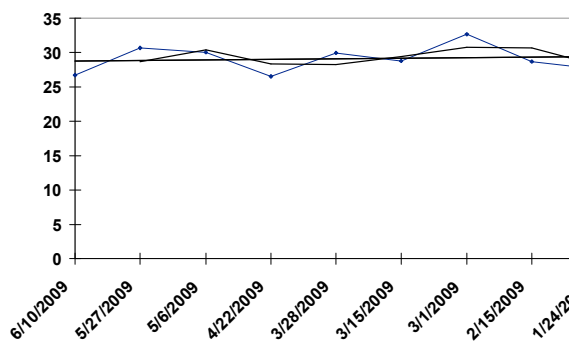


HV 09/23/2009 RACE: 4 1800 SURFACE: T Class: 4

MASTER DREAMER

128 - NZ BAY 8YO G, (DREAM WELL - TOUGH CALL, )

Date	Trk	Surf	Dis (M)	Class	Wt	Fin	Layoff Days	TS
06/10/2009	H	T GF	1800	4	121	1	14	26.726
05/27/2009	H	T GY	1650	4	121	3	21	30.659
05/06/2009	H	T G	1800	4	124	5	14	30.081
04/22/2009	H	T G	1650	4	123	5	25	26.559
03/28/2009	S	T GY	1400	4	123	12	13	29.976
03/15/2009	S	T GD	1400	4	126	9	14	28.812
03/01/2009	S	T GY	1400	4	129	7	14	32.691
02/15/2009	S	T GD	1400	4	126	13	22	28.652
01/24/2009	S	S FT	1650	4	131	9		27.586

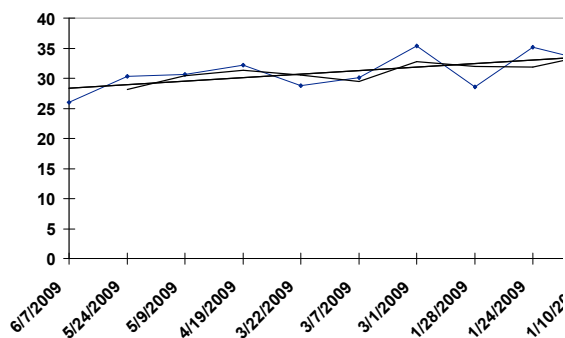


HV 09/23/2009 RACE: 5 1650 SURFACE: T Class: 4

PACIFIC ALLIANCE

133 - GB BAY 9YO G, (ROYAL APPLAUSE - JUGENDLIEBE, )

Date	Trk	Surf	Dis (M)	Class	Wt	Fin	Layoff Days	TS
06/07/2009	S	T GF	1600	4	126	11	14	26.022
05/24/2009	S	T YS	1600	4	126	1	15	30.291
05/09/2009	S	T G	1600	4	126	4	20	30.597
04/19/2009	H	T GY	1800	4	128	5	28	32.160
03/22/2009	S	T GD	1600	4	126	3	15	28.805
03/07/2009	S	T GY	1600	4	122	1	6	30.122
03/01/2009	S	T GY	1600	5	133	1	32	35.387
01/28/2009	S	T GD	1600	5	129	1	4	28.607
01/24/2009	S	T GD	1800	5	128	3	14	35.159
01/10/2009	S	S GD	1800	5	129	4		32.745

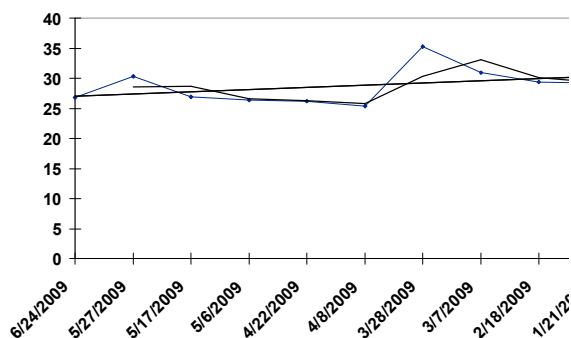


**HV** 09/23/2009 RACE: 5 1650 SURFACE: T Class: 4

**ABLE DRAGON**

132 - AUS BAY 5YO G, (CHOISIR - NORTHWOOD LADY, )

<u>Date</u>	<u>Trk</u>	<u>Surf</u>	<u>Dis (M)</u>	<u>Class</u>	<u>Wt</u>	<u>Fin</u>	<u>Layoff Days</u>	<u>TS</u>
06/24/2009	H	T GF	1650	4S	124	2	28	<b>26.802</b>
05/27/2009	H	T GY	2200	4	133	10	10	<b>30.345</b>
05/17/2009	S	T GF	1800	3	103	6	11	<b>26.878</b>
05/06/2009	H	T G	1650	3	116	4	14	<b>26.383</b>
04/22/2009	H	T G	1650	3	110	6	14	<b>26.177</b>
04/08/2009	H	T G	1650	3	118	6	11	<b>25.332</b>
03/28/2009	S	T GY	1800	3	122	7	21	<b>35.243</b>
03/07/2009	S	T GY	1800	3	124	7	17	<b>30.903</b>
02/18/2009	H	T GD	1650	3	126	6	28	<b>29.369</b>
01/21/2009	H	T GD	1650	3	126	9		<b>29.189</b>

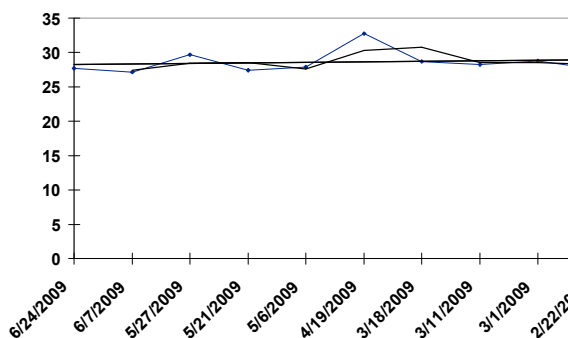


**HV** 09/23/2009 RACE: 5 1650 SURFACE: T Class: 4

**ELITE FORTUNE**

132 - IRE BAY 4YO G, (CHOISIR - CHANTARELLA, )

<u>Date</u>	<u>Trk</u>	<u>Surf</u>	<u>Dis (M)</u>	<u>Class</u>	<u>Wt</u>	<u>Fin</u>	<u>Layoff Days</u>	<u>TS</u>
06/24/2009	H	T GF	1650	3	116	6	17	<b>27.688</b>
06/07/2009	S	T GF	1200	3	119	7	11	<b>27.150</b>
05/27/2009	H	T Y	1200	3	119	6	6	<b>29.692</b>
05/21/2009	H	T GF	1650	3	111	7	15	<b>27.404</b>
05/06/2009	H	T G	1650	3	120	8	17	<b>27.850</b>
04/19/2009	H	T GY	1200	3	122	6	32	<b>32.788</b>
03/18/2009	H	T GD	1200	3	121	9	7	<b>28.719</b>
03/11/2009	H	T GD	1200	3S	121	5	10	<b>28.245</b>
03/01/2009	S	T GY	1200	3	124	9	7	<b>28.762</b>
02/22/2009	S	T GD	1200	3	127	10		<b>27.625</b>

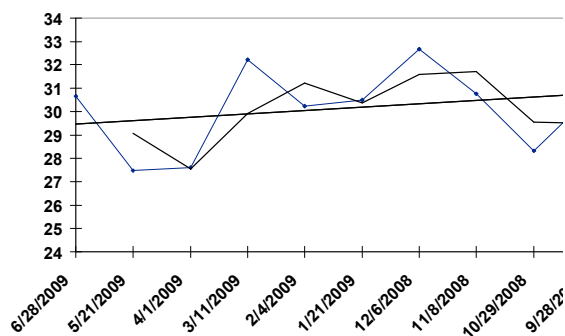


HV 09/23/2009 RACE: 5 1650 SURFACE: T Class: 4

**BREAKING POINT**

131 - IRE BAY 4YO G, (CHOISIR - VINO VERITAS,)

Date	Trk	Surf	Dis (M)	Class	Wt	Fin	Layoff Days	TS
06/28/2009	S	T S	1400	4	129	2	38	30.655
05/21/2009	H	T GF	1650	4	129	5	50	27.487
04/01/2009	H	T G	1650	4	130	12	21	27.616
03/11/2009	H	T GD	2200	4	132	5	35	32.210
02/04/2009	H	T GD	1800	4	133	4	14	30.246
01/21/2009	H	T GD	1650	4	129	3	46	30.500
12/06/2008	S	S GD	1800	4	125	8	28	32.674
11/08/2008	S	S GD	1650	4	132	6	10	30.767
10/29/2008	S	S GD	1650	4	127	1	31	28.318
09/28/2008	S	T GF	1600	4	125	10		30.679

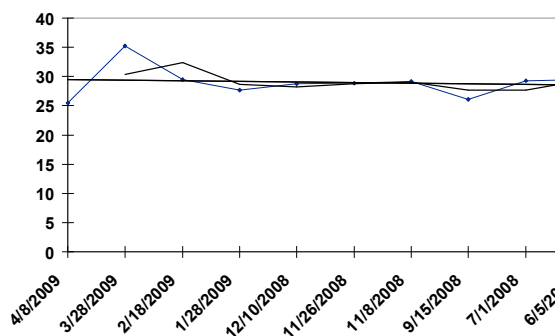


**HV** 09/23/2009 RACE: 5 1650 SURFACE: T Class: 4

**MAINLAND SHUTTLE**

131 - AUS BAY / BROW 7YO G, (OVER - DINNA FASH, )

<u>Date</u>	<u>Trk</u>	<u>Surf</u>	<u>Dis (M)</u>	<u>Class</u>	<u>Wt</u>	<u>Fin</u>	<u>Layoff Days</u>	<u>TS</u>
04/08/2009	H	<b>T G</b>	1650	3	111	5	11	<b>25.494</b>
03/28/2009	S	<b>T GY</b>	1800	3	120	10	38	<b>35.208</b>
02/18/2009	H	<b>T GD</b>	1650	3	125	5	21	<b>29.516</b>
01/28/2009	S	<b>T GD</b>	1600	3B	124	13	49	<b>27.736</b>
12/10/2008	H	<b>T GD</b>	1650	3	121	3	14	<b>28.754</b>
11/26/2008	H	<b>T GD</b>	1650	3	121	3	18	<b>28.838</b>
11/08/2008	S	<b>S GD</b>	1650	3	123	12	54	<b>29.201</b>
09/15/2008	S	<b>T GF</b>	1400	3	118	5	76	<b>26.110</b>
07/01/2008	S	<b>T GY</b>	1600	3	129	6	26	<b>29.315</b>
06/05/2008	H	<b>T GD</b>	1650	3	123	4		<b>29.525</b>

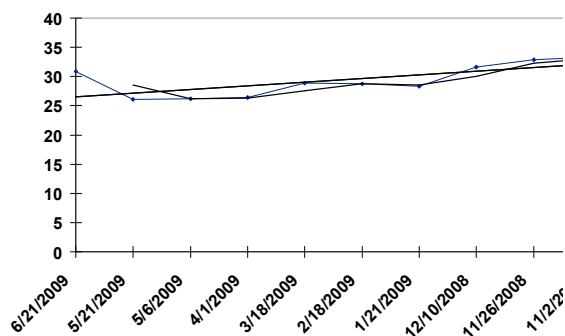


HV 09/23/2009 RACE: 5 1650 SURFACE: T Class: 4

**BULB TREASURE**

122 - AUS BAY 6YO G, (CANNY LAD - CENTURY BIRD, )

Date	Trk	Surf	Dis (M)	Class	Wt	Fin	Layoff Days	TS
06/21/2009	S	S GD	1800	4	122	4	31	30.911
05/21/2009	H	T GF	1650	4	121	2	15	26.096
05/06/2009	H	T G	1650	4	120	4	35	26.235
04/01/2009	H	T G	1650	4	121	7	14	26.403
03/18/2009	H	T GD	1650	4	115	1	28	28.841
02/18/2009	H	T GD	1650	4	117	6	28	28.768
01/21/2009	H	T GD	1650	4	117	12	42	28.370
12/10/2008	H	T GD	1650	4	120	4	14	31.662
11/26/2008	H	T GD	1800	4	114	8	24	32.848
11/02/2008	S	T GD	1800	4	117	13		33.346

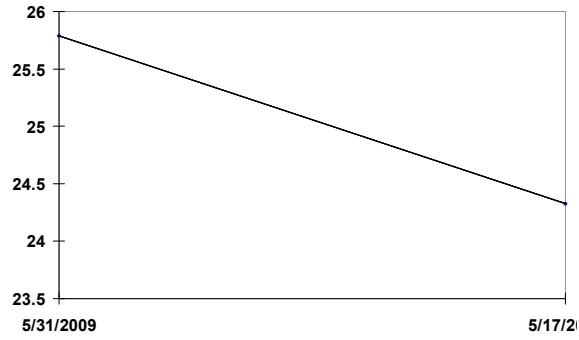


**HV** 09/23/2009 RACE: 5 1650 SURFACE: T Class: 4

**HIGH NOTE**

122 - AUS BAY 4YO G, (FANTASTIC LIGHT - HIDE MY GRADES, )

<u>Date</u>	<u>Trk</u>	<u>Surf</u>	<u>Dis (M)</u>	<u>Class</u>	<u>Wt</u>	<u>Fin</u>	<u>Layoff Days</u>	<u>TS</u>
05/31/2009	S	T G	1400	4	125	6	14	<b>25.789</b>
05/17/2009	S	T GF	1000	4	121	8		<b>24.324</b>

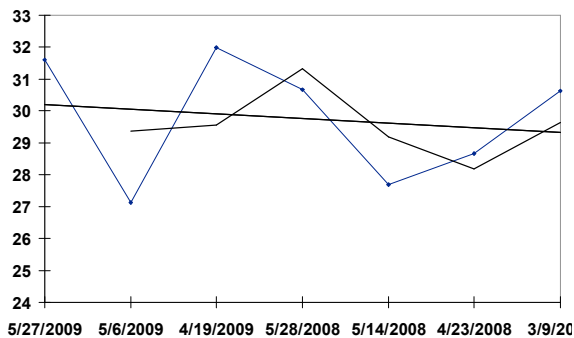


**HV** 09/23/2009 RACE: 5 1650 SURFACE: T Class: 4

**SUDDEN SPLENDOR**

119 - IRE BAY 7YO G, (INCHINOR - SUDDENLY, )

<u>Date</u>	<u>Trk</u>	<u>Surf</u>	<u>Dis (M)</u>	<u>Class</u>	<u>Wt</u>	<u>Fin</u>	<u>Layoff Days</u>	<u>TS</u>
05/27/2009	H	T GY	1650	4	120	10	21	<b>31.598</b>
05/06/2009	H	T G	1650	4	114	1	17	<b>27.120</b>
04/19/2009	H	T GY	1650	4	117	7	326	<b>31.983</b>
05/28/2008	H	T GD	1650	4	122	9	14	<b>30.671</b>
05/14/2008	H	T GF	1650	4	123	7	21	<b>27.697</b>
04/23/2008	H	T GD	1200	4	123	10	45	<b>28.658</b>
03/09/2008	S	T GD	1400	4	128	13		<b>30.621</b>

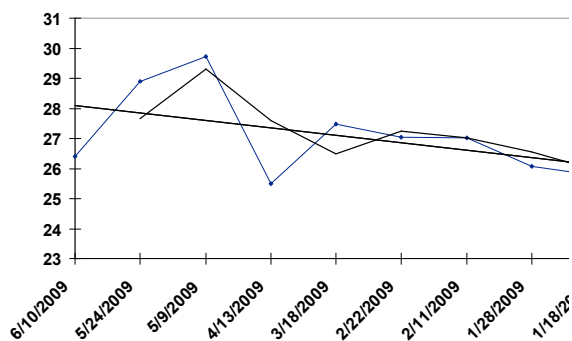


HV 09/23/2009 RACE: 5 1650 SURFACE: T Class: 4

AMITYSHIP

120 - NZ BAY 4YO G, (PENTIRE - SPRAYPAINT,)

Date	Trk	Surf	Dis (M)	Class	Wt	Fin	Layoff Days	TS
06/10/2009	H	T GF	1650	4	108	10	17	26.397
05/24/2009	S	T YS	1600	4	116	3	15	28.905
05/09/2009	S	T G	1600	4	115	2	26	29.726
04/13/2009	S	T GF	1400	4	112	13	26	25.485
03/18/2009	H	T GD	1200	4	112	9	24	27.471
02/22/2009	S	T GD	1600	4	119	4	11	27.031
02/11/2009	H	T GD	1200	4	120	8	14	27.021
01/28/2009	S	T GD	1200	4B	123	9	10	26.075
01/18/2009	S	T GD	1200	4	119	13		25.762

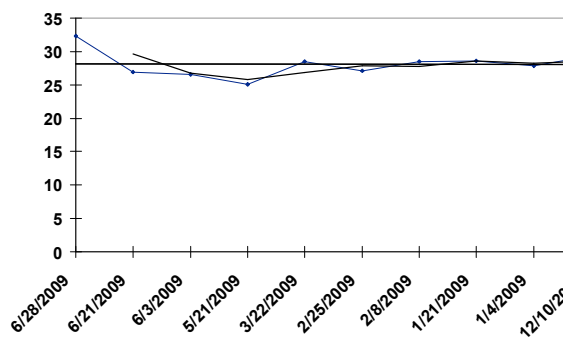


**HV** 09/23/2009 RACE: 5 1650 SURFACE: T Class: 4

**VICTORY MASCOT**

116 - NZ CHESTNUT 4YO G , (ENCOSTA DE LAGO - FLUSHED, )

<u>Date</u>	<u>Trk</u>	<u>Surf</u>	<u>Dis (M)</u>	<u>Class</u>	<u>Wt</u>	<u>Fin</u>	<u>Layoff Days</u>	<u>TS</u>
06/28/2009	S	T Y	1600	5	133	1	7	<b>32.281</b>
06/21/2009	S	T GF	1800	5	129	2	18	<b>26.878</b>
06/03/2009	H	T G	1650	5	126	2	13	<b>26.557</b>
05/21/2009	H	T GF	1200	5	131	12	60	<b>25.054</b>
03/22/2009	S	T GD	1400	5	132	11	25	<b>28.541</b>
02/25/2009	H	T GD	1200	4	111	7	17	<b>27.089</b>
02/08/2009	S	T GD	1400	4	113	8	18	<b>28.484</b>
01/21/2009	H	T GD	1650	4	120	8	17	<b>28.639</b>
01/04/2009	S	T GD	1600	4	124	7	25	<b>27.866</b>
12/10/2008	H	T GD	1650	4	123	11		<b>29.296</b>

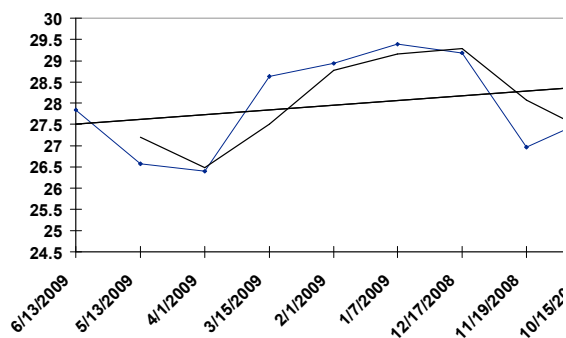


HV 09/23/2009 RACE: 5 1650 SURFACE: T Class: 4

FLORAL IMAGE

112 - NZ CHESTNUT 5YO G, (STRATEGIC IMAGE - HELEN'S PRIDE, )

Date	Trk	Surf	Dis (M)	Class	Wt	Fin	Layoff Days	TS
06/13/2009	S	T G	1400	4S	118	13	31	27.835
05/13/2009	H	T G	1650	4S	120	8	42	26.577
04/01/2009	H	T G	1650	4	122	10	17	26.399
03/15/2009	S	T GD	1200	4	121	11	42	28.622
02/01/2009	S	T GD	1400	4	113	3	25	28.937
01/07/2009	H	T GD	1650	4	123	9	21	29.380
12/17/2008	H	T GD	1650	4	121	3	28	29.178
11/19/2008	H	T GD	1200	4	124	8	35	26.963
10/15/2008	H	T GD	1000	4	122	8		27.651

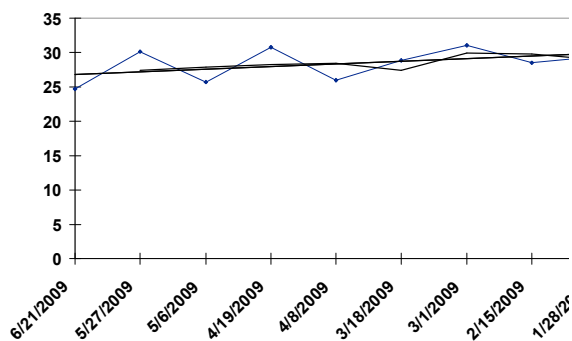


HV 09/23/2009 RACE: 5 1650 SURFACE: T Class: 4

ROCKET AND GOLD

111 - NZ BAY 6YO G, (DANSKE - KATE'S GREAT,)

Date	Trk	Surf	Dis (M)	Class	Wt	Fin	Layoff Days	TS
06/21/2009	S	T GF	1600	4	114	11	25	24.677
05/27/2009	H	T GY	1650	4	118	6	21	30.164
05/06/2009	H	T G	1650	4	118	12	17	25.670
04/19/2009	H	T GY	1650	4	123	6	11	30.743
04/08/2009	H	T G	1650	4	122	6	21	26.014
03/18/2009	H	T GD	1650	4	123	9	17	28.843
03/01/2009	S	T GY	1800	4	124	9	14	31.073
02/15/2009	S	T GD	2000	4	121	11	18	28.474
01/28/2009	S	T GD	1800	4B	121	2		29.373

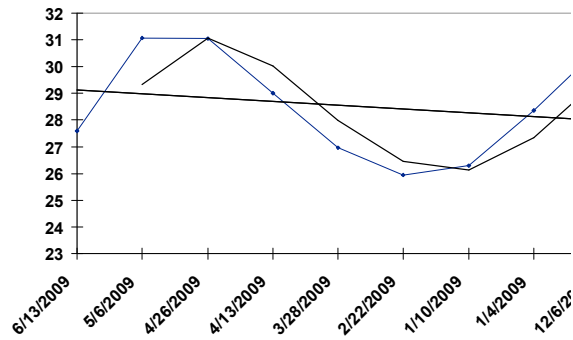


HV 09/23/2009 RACE: 5 1650 SURFACE: T Class: 4

**NAMJONG FIGHTERS**

123 - AUS BAY 7YO G, (AGNES WORLD - PERCY'S GIRL, )

Date	Trk	Surf	Dis (M)	Class	Wt	Fin	Layoff Days	TS
06/13/2009	S	S GD	1200	4	123	6	38	27.601
05/06/2009	H	T G	1800	4	126	9	10	31.081
04/26/2009	S	T GY	1800	3	111	11	13	31.047
04/13/2009	S	T GF	1600	3	111	11	16	29.012
03/28/2009	S	S GD	1800	4	131	10	34	26.965
02/22/2009	S	T GD	1200	3	120	11	43	25.937
01/10/2009	S	T GF	1400	3	122	7	6	26.305
01/04/2009	S	T GD	1400	3	114	13	29	28.354
12/06/2008	S	S GD	1200	3	124	6		30.692

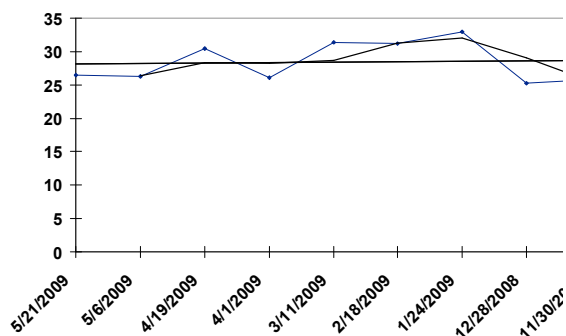


HV 09/23/2009 RACE: 5 1650 SURFACE: T Class: 4

**MINGS' HERO**

133 - NZ BAY 5YO G, (DANSKE - AGGIE GREY, )

<u>Date</u>	<u>Trk</u>	<u>Surf</u>	<u>Dis (M)</u>	<u>Class</u>	<u>Wt</u>	<u>Fin</u>	<u>Layoff Days</u>	<u>TS</u>
05/21/2009	H	T GF	1650	4	133	4	15	26.490
05/06/2009	H	T G	1650	3	113	9	17	26.244
04/19/2009	H	T GY	1800	3	116	12	18	30.443
04/01/2009	H	T G	1650	3	116	8	21	26.052
03/11/2009	H	T GD	1650	3	115	3	21	31.365
02/18/2009	H	T GD	1650	3	115	4	25	31.221
01/24/2009	S	T GD	2000	3	117	5	27	32.922
12/28/2008	S	T GF	1600	3	118	7	28	25.251
11/30/2008	S	T GF	1400	3	119	7		25.825

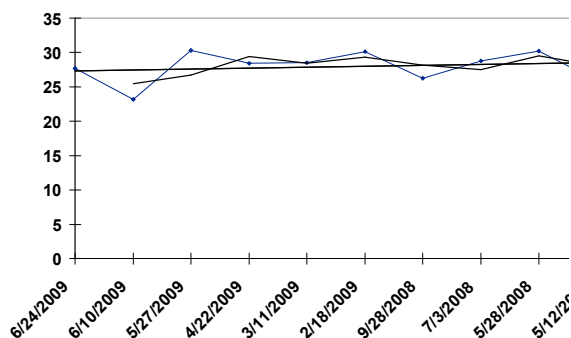


**HV** 09/23/2009 RACE: 6 1000 SURFACE: T Class: 3

**GOOD TO GO**

133 - AUS BROWN 7YO G, (MORE THAN READY - LADY JAKEO,)

<u>Date</u>	<u>Trk</u>	<u>Surf</u>	<u>Dis (M)</u>	<u>Class</u>	<u>Wt</u>	<u>Fin</u>	<u>Layoff Days</u>	<u>TS</u>
06/24/2009	H	T GF	1200	3	130	9	14	<b>27.668</b>
06/10/2009	H	T GF	1000	2	118	10	14	<b>23.172</b>
05/27/2009	H	T GY	1000	3	133	4	35	<b>30.314</b>
04/22/2009	H	T G	1000	3	133	2	42	<b>28.415</b>
03/11/2009	H	T GD	1000	3	133	8	21	<b>28.505</b>
02/18/2009	H	T GD	1200	3	129	7	143	<b>30.131</b>
09/28/2008	S	T GF	1200	2	116	7	87	<b>26.213</b>
07/03/2008	H	T GD	1000	3	133	3	36	<b>28.803</b>
05/28/2008	H	T GD	1000	3	133	5	16	<b>30.194</b>
05/12/2008	S	T GF	1000	2	113	8		<b>25.860</b>

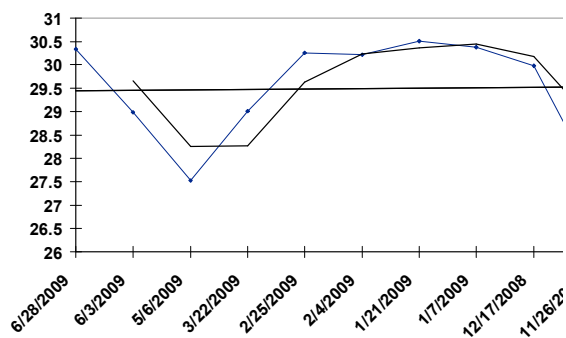


HV 09/23/2009 RACE: 6 1000 SURFACE: T Class: 3

**LONGWAH RISING**

130 - AUS BAY 5YO G, (COMMANDS - ACHIEVABLE, )

Date	Trk	Surf	Dis (M)	Class	Wt	Fin	Layoff Days	TS
06/28/2009	S	T S	1400	3	120	8	25	30.335
06/03/2009	H	T G	1200	3	123	12	28	28.982
05/06/2009	H	T G	1200	3	124	2	45	27.529
03/22/2009	S	T GD	1400	3	128	12	25	29.015
02/25/2009	H	T GD	1200	3	128	9	21	30.254
02/04/2009	H	T GD	1200	3	128	5	14	30.213
01/21/2009	H	T GD	1200	3	132	5	14	30.504
01/07/2009	H	T GD	1200	3	127	2	21	30.379
12/17/2008	H	T GD	1200	3	120	1	21	29.975
11/26/2008	H	T GD	1200	3	113	2		27.663

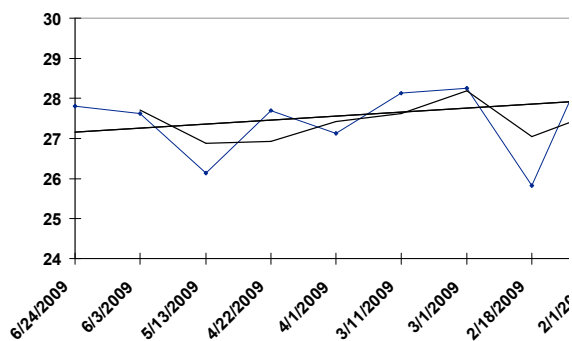


**HV** 09/23/2009 RACE: 6 1000 SURFACE: T Class: 3

**TEAM WORK**

130 - NZ CHESTNUT 6YO G, (DANZIGHILL - TATTS M' NAME, )

<u>Date</u>	<u>Trk</u>	<u>Surf</u>	<u>Dis (M)</u>	<u>Class</u>	<u>Wt</u>	<u>Fin</u>	<u>Layoff Days</u>	<u>TS</u>
06/24/2009	H	T GF	1000	3	132	7	21	<b>27.801</b>
06/03/2009	H	T G	1200	3	127	8	21	<b>27.611</b>
05/13/2009	H	T GF	1000	3	124	1	21	<b>26.135</b>
04/22/2009	H	T G	1000	3	121	3	21	<b>27.703</b>
04/01/2009	H	T G	1200	3	121	4	21	<b>27.117</b>
03/11/2009	H	T GD	1000	3	121	5	10	<b>28.125</b>
03/01/2009	S	T GY	1000	3	120	13	11	<b>28.250</b>
02/18/2009	H	T GD	1000	3	119	11	17	<b>25.828</b>
02/01/2009	S	T GD	1000	3	119	10		<b>29.464</b>

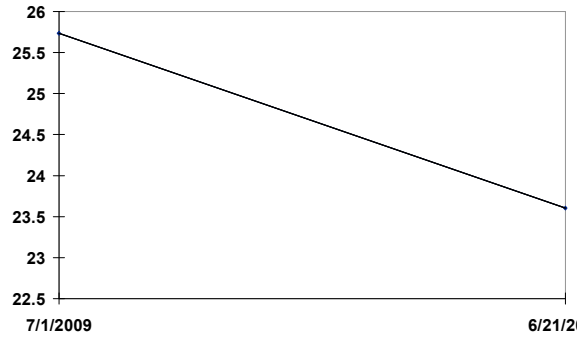


**HV**      09/23/2009    RACE: 6      1000      SURFACE: T      Class: 3

**VAUGIRARD**

122 - AUS BAY 4YO G, (HEMINGWAY - BASENJI, )

<u>Date</u>	<u>Trk</u>	<u>Surf</u>	<u>Dis (M)</u>	<u>Class</u>	<u>Wt</u>	<u>Fin</u>	<u>Layoff Days</u>	<u>TS</u>
07/01/2009	S	T GF	1600	3	130	8	10	<b>25.736</b>
06/21/2009	S	T GF	1200	3	124	11		<b>23.605</b>

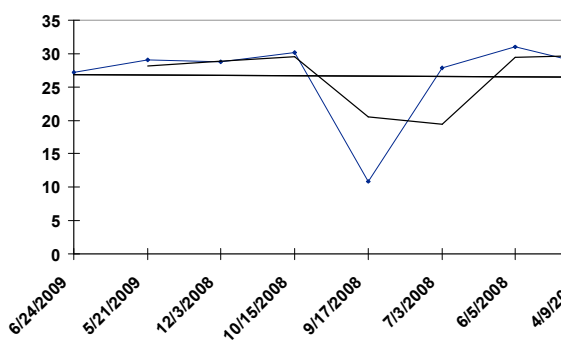


**HV** 09/23/2009 RACE: 6 1000 SURFACE: T Class: 3

**KEEN SOUL**

120 - AUS CHESTNUT 6YO G, (SPINNING WORLD - ANSAMI, )

<u>Date</u>	<u>Trk</u>	<u>Surf</u>	<u>Dis (M)</u>	<u>Class</u>	<u>Wt</u>	<u>Fin</u>	<u>Layoff Days</u>	<u>TS</u>
06/24/2009	H	T GF	1200	3	111	7	34	<b>27.192</b>
05/21/2009	H	T GF	1200	3	110	4	169	<b>29.062</b>
12/03/2008	H	T GD	1000	3	113	5	49	<b>28.749</b>
10/15/2008	H	T GD	1000	3	119	7	28	<b>30.214</b>
09/17/2008	H	T GF	1000	4	133	1	76	<b>10.897</b>
07/03/2008	H	T GD	1200	4	129	7	28	<b>27.819</b>
06/05/2008	H	T GD	1000	4	128	1	57	<b>31.040</b>
04/09/2008	H	T GD	1000	4	123	2		<b>28.291</b>

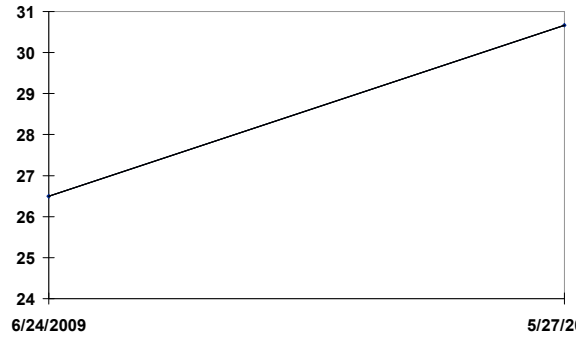


**HV** 09/23/2009 RACE: 6 1000 SURFACE: T Class: 3

**RAINBOW SEEKER**

120 - GB BAY 3YO G, (DUBAI DESTINATION - ZEPHIRINE DROUHIN,)

<u>Date</u>	<u>Trk</u>	<u>Surf</u>	<u>Dis (M)</u>	<u>Class</u>	<u>Wt</u>	<u>Fin</u>	<u>Layoff Days</u>	<u>TS</u>
06/24/2009	H	<b>T GF</b>	1000	3	122	10	28	<b>26.492</b>
05/27/2009	H	<b>T GY</b>	1000	3	115	9		<b>30.664</b>

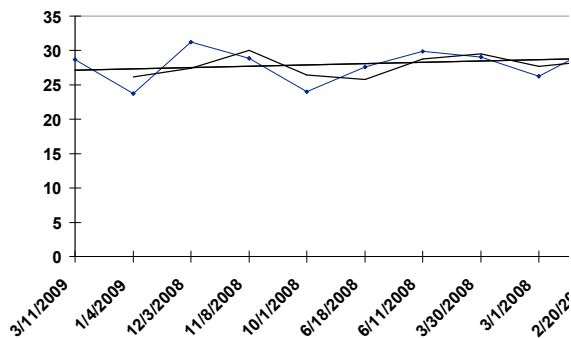


**HV** 09/23/2009 RACE: 6 1000 SURFACE: T Class: 3

**SHY BALDY**

118 - AUS CHESTNUT 6YO G, (SEQUALO - QUEEN BUZZ, )

<u>Date</u>	<u>Trk</u>	<u>Surf</u>	<u>Dis (M)</u>	<u>Class</u>	<u>Wt</u>	<u>Fin</u>	<u>Layoff Days</u>	<u>TS</u>
03/11/2009	H	T GD	1000	3	119	6	66	<b>28.675</b>
01/04/2009	S	T GD	1000	3	119	11	32	<b>23.709</b>
12/03/2008	H	T GD	1000	4	132	1	25	<b>31.219</b>
11/08/2008	S	T GD	1000	4	121	2	38	<b>28.886</b>
10/01/2008	S	T GF	1000	4	125	2	105	<b>24.008</b>
06/18/2008	H	T Y	1000	4	129	5	7	<b>27.606</b>
06/11/2008	H	T GD	1200	3	109	8	73	<b>29.864</b>
03/30/2008	S	T GD	1000	3	116	13	29	<b>29.066</b>
03/01/2008	S	T GD	1000	3	114	10	10	<b>26.286</b>
02/20/2008	H	T GD	1000	3	120	5		<b>30.668</b>

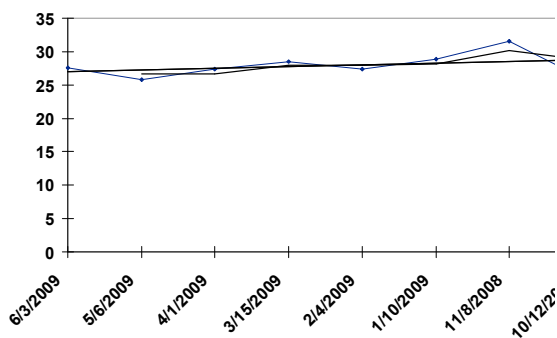


HV 09/23/2009 RACE: 6 1000 SURFACE: T Class: 3

LOYAL ARMY

119 - AUS BAY 5YO G, (STRATEGIC - BRIKO,)

Date	Trk	Surf	Dis (M)	Class	Wt	Fin	Layoff Days	TS
06/03/2009	H	T G	1200	4	125	1	28	27.549
05/06/2009	H	T G	1200	4	130	2	35	25.796
04/01/2009	H	T G	1200	4S	121	1	17	27.417
03/15/2009	S	T GD	1200	4	123	5	39	28.471
02/04/2009	H	T GD	1200	4	122	5	25	27.344
01/10/2009	S	T GD	1200	4	124	3	63	28.836
11/08/2008	S	T GD	1400	4	125	10	27	31.533
10/12/2008	S	T GF	1200	4	124	5		25.999

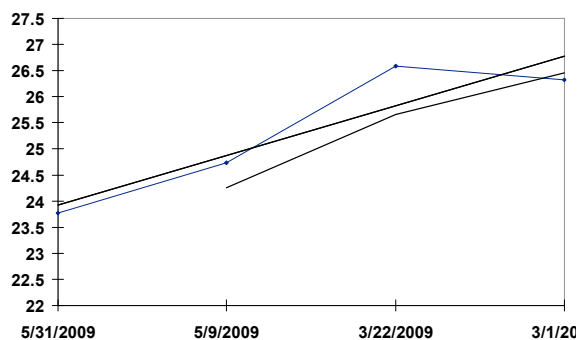


**HV** 09/23/2009 RACE: 6 1000 SURFACE: T Class: 3

**GOOD STRIKE**

117 - AUS BAY 5YO G, (MAGIC ALBERT - CUPRO,)

<u>Date</u>	<u>Trk</u>	<u>Surf</u>	<u>Dis (M)</u>	<u>Class</u>	<u>Wt</u>	<u>Fin</u>	<u>Layoff Days</u>	<u>TS</u>
05/31/2009	S	T G	1200	3	118	6	22	<b>23.772</b>
05/09/2009	S	T G	1200	4	132	2	48	<b>24.732</b>
03/22/2009	S	T GD	1200	4	132	2	21	<b>26.580</b>
03/01/2009	S	T GD	1000	4	122	1		<b>26.323</b>

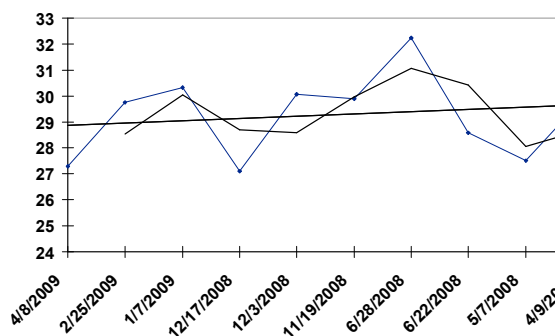


HV 09/23/2009 RACE: 6 1000 SURFACE: T Class: 3

**K-JACK**

117 - NZ BAY 6YO G, (KEEPER - RARE BITS,)

Date	Trk	Surf	Dis (M)	Class	Wt	Fin	Layoff Days	TS
04/08/2009	H	T G	1200	3	107	3	42	27.304
02/25/2009	H	T GD	1200	3	104	6	49	29.760
01/07/2009	H	T GD	1200	4	125	1	21	30.331
12/17/2008	H	T GD	1200	4	126	6	14	27.094
12/03/2008	H	T GD	1200	4	115	1	14	30.061
11/19/2008	H	T GD	1200	4	113	1	144	29.894
06/28/2008	S	S WS	1200	4	113	10	6	32.243
06/22/2008	S	T GD	1200	4	115	7	46	28.595
05/07/2008	H	T GF	1200	4	111	6	28	27.515
04/09/2008	H	T GD	1200	5	124	1		29.900

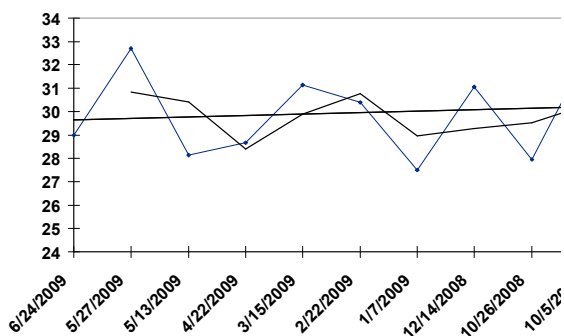


HV 09/23/2009 RACE: 6 1000 SURFACE: T Class: 3

**THUNDER FLASH**

113 - AUS BAY 6YO G, (SECRET SAVINGS - FLASH FAIRY,)

Date	Trk	Surf	Dis (M)	Class	Wt	Fin	Layoff Days	TS
06/24/2009	H	T GF	1000	3	114	4	28	28.991
05/27/2009	H	T GY	1000	3	116	5	14	32.689
05/13/2009	H	T GF	1000	3	122	8	21	28.134
04/22/2009	H	T G	1000	3	113	6	38	28.660
03/15/2009	S	T GD	1200	3	130	10	21	31.133
02/22/2009	S	T GD	1200	3	124	4	46	30.385
01/07/2009	H	T GD	1200	2	115	9	24	27.514
12/14/2008	S	T GD	1200	3	130	12	49	31.068
10/26/2008	S	T GD	1400	3	123	13	21	27.958
10/05/2008	S	S WS	1200	3	123	9		32.642

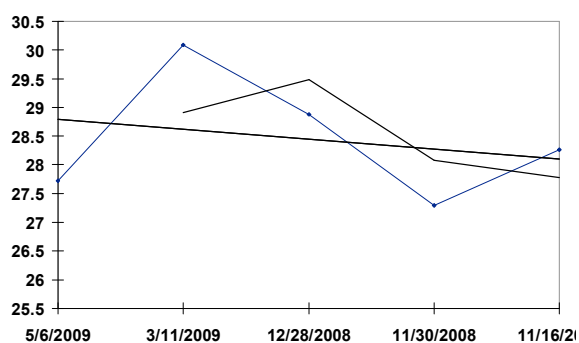


**HV** 09/23/2009 RACE: 6 1000 SURFACE: T Class: 3

**BLEDISLOE**

125 - AUS BAY 4YO C, (EXCEED AND EXCEL - PRIZED GLORY, )

<u>Date</u>	<u>Trk</u>	<u>Surf</u>	<u>Dis (M)</u>	<u>Class</u>	<u>Wt</u>	<u>Fin</u>	<u>Layoff Days</u>	<u>TS</u>
05/06/2009	H	<b>T G</b>	1200	3	128	9	56	<b>27.730</b>
03/11/2009	H	<b>T GD</b>	1200	3S	129	6	73	<b>30.085</b>
12/28/2008	S	<b>T GF</b>	1400	3	133	12	28	<b>28.875</b>
11/30/2008	S	<b>T GF</b>	1600	2	120	14	14	<b>27.288</b>
11/16/2008	S	<b>T GD</b>	1400	2	124	10		<b>28.261</b>

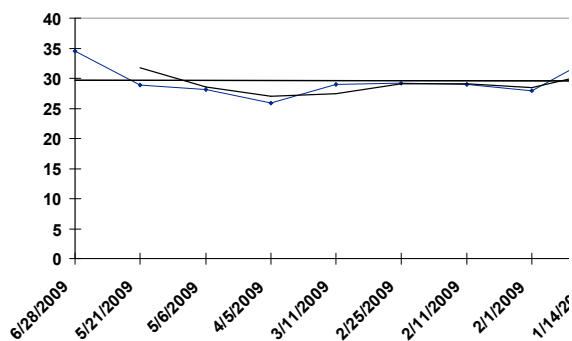


**HV** 09/23/2009 RACE: 7 1800 SURFACE: T Class: 3

**FAT DRAGON**

133 - NZ BROWN 9YO G, (O'REILLY - OUR BIG BIRD,)

<u>Date</u>	<u>Trk</u>	<u>Surf</u>	<u>Dis (M)</u>	<u>Class</u>	<u>Wt</u>	<u>Fin</u>	<u>Layoff Days</u>	<u>TS</u>
06/28/2009	S	T S	2000	3	122	13	38	<b>34.553</b>
05/21/2009	H	T GF	1650	3	129	4	15	<b>28.903</b>
05/06/2009	H	T G	2200	3	123	10	31	<b>28.192</b>
04/05/2009	S	T G	1400	1	114	14	25	<b>25.833</b>
03/11/2009	H	T GD	1650	1	106	12	14	<b>28.949</b>
02/25/2009	H	T GD	1650	1	116	8	14	<b>29.130</b>
02/11/2009	H	T GD	1800	2	112	3	10	<b>29.010</b>
02/01/2009	S	T GD	1600	2	129	7	18	<b>27.960</b>
01/14/2009	H	T GD	1800	2	121	5		<b>33.853</b>

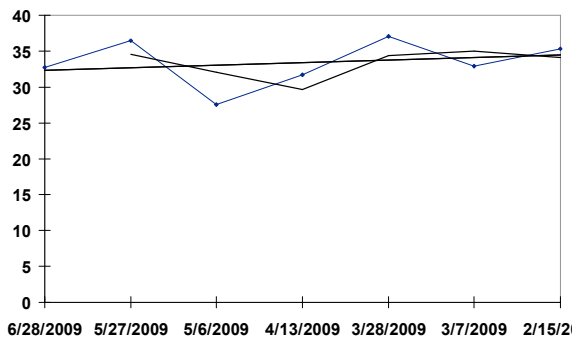


**HV** 09/23/2009 RACE: 7 1800 SURFACE: T Class: 3

**PRINCE KALAMOUN**

133 - IRE CHESTNUT 4YO G , (Desert Prince - Grenouillere, )

<u>Date</u>	<u>Trk</u>	<u>Surf</u>	<u>Dis (M)</u>	<u>Class</u>	<u>Wt</u>	<u>Fin</u>	<u>Layoff Days</u>	<u>TS</u>
06/28/2009	S	T S	2000	3	131	8	32	<b>32.707</b>
05/27/2009	H	T Y	1800	2	119	4	21	<b>36.486</b>
05/06/2009	H	T G	2200	3	129	2	23	<b>27.564</b>
04/13/2009	S	T GF	1800	1	111	8	16	<b>31.700</b>
03/28/2009	S	T GY	1800	3	133	3	21	<b>37.089</b>
03/07/2009	S	T GY	1800	3	133	3	20	<b>32.938</b>
02/15/2009	S	T GD	1800	3	132	13		<b>35.297</b>

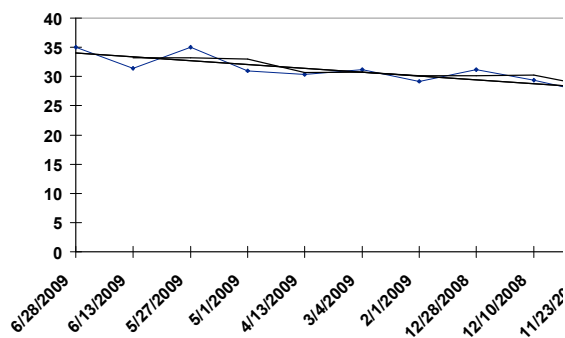


**HV** 09/23/2009 RACE: 7 1800 SURFACE: T Class: 3

**TOP HONOR**

130 - GER BAY 8YO G, (HIGHEST HONOR - SALONROLLE,)

<u>Date</u>	<u>Trk</u>	<u>Surf</u>	<u>Dis (M)</u>	<u>Class</u>	<u>Wt</u>	<u>Fin</u>	<u>Layoff Days</u>	<u>TS</u>
06/28/2009	S	T S	2000	3	126	9	15	<b>34.991</b>
06/13/2009	S	T G	1800	1	113	5	17	<b>31.353</b>
05/27/2009	H	T Y	1800	2	125	6	26	<b>34.974</b>
05/01/2009	S	T GF	2400	HK	113	4	18	<b>31.020</b>
04/13/2009	S	T GF	1800	1	119	11	40	<b>30.374</b>
03/04/2009	S	S GD	1650	2	125	8	31	<b>31.155</b>
02/01/2009	S	S GD	1650	1	120	9	35	<b>29.189</b>
12/28/2008	S	S GD	1650	1	125	5	18	<b>31.157</b>
12/10/2008	H	T GD	1800	1	127	8	17	<b>29.354</b>
11/23/2008	S	S GD	1650	1	128	12		<b>27.209</b>

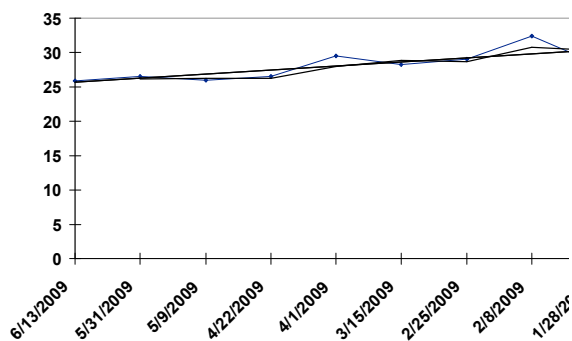


**HV** 09/23/2009 RACE: 7 1800 SURFACE: T Class: 3

**LOCAL POWER**

130 - NZ BAY 6YO G, (VOLKSRAAD - MAY BE GREAT, )

<u>Date</u>	<u>Trk</u>	<u>Surf</u>	<u>Dis (M)</u>	<u>Class</u>	<u>Wt</u>	<u>Fin</u>	<u>Layoff Days</u>	<u>TS</u>
06/13/2009	S	T G	1400	3	123	6	13	<b>25.860</b>
05/31/2009	S	T G	1400	3	130	10	22	<b>26.497</b>
05/09/2009	S	T G	1400	3	123	8	17	<b>25.982</b>
04/22/2009	H	T G	1650	3	123	10	21	<b>26.523</b>
04/01/2009	H	T G	2200	2	117	12	17	<b>29.462</b>
03/15/2009	S	T GD	1400	2	112	6	18	<b>28.196</b>
02/25/2009	H	T GD	1650	3	126	11	17	<b>29.085</b>
02/08/2009	S	T GD	1600	3	126	1	11	<b>32.382</b>
01/28/2009	S	T GD	1400	3B	122	12		<b>28.293</b>

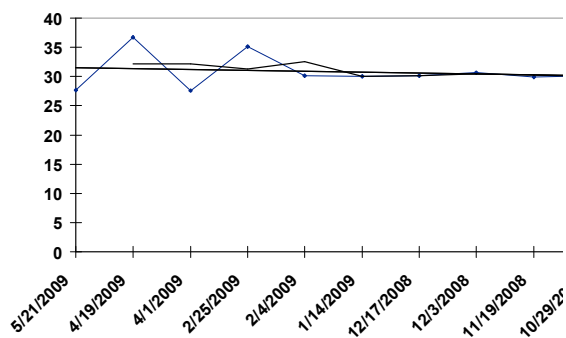


**HV** 09/23/2009 RACE: 7 1800 SURFACE: T Class: 3

**WARM EMBRACES**

130 - IRE CHESTNUT 5YO C, (HALLING - ZAPPING, )

<u>Date</u>	<u>Trk</u>	<u>Surf</u>	<u>Dis (M)</u>	<u>Class</u>	<u>Wt</u>	<u>Fin</u>	<u>Layoff Days</u>	<u>TS</u>
05/21/2009	H	T GF	1650	3	124	10	32	<b>27.697</b>
04/19/2009	H	T GY	1800	3	133	4	18	<b>36.661</b>
04/01/2009	H	T G	1650	3	126	6	35	<b>27.552</b>
02/25/2009	H	T GD	1800	3	124	1	21	<b>35.094</b>
02/04/2009	H	T GD	1650	3	125	2	21	<b>30.127</b>
01/14/2009	H	T GD	1650	3	123	12	28	<b>30.016</b>
12/17/2008	H	T GD	1650	3	117	5	14	<b>30.162</b>
12/03/2008	H	T GD	1650	3	120	2	14	<b>30.656</b>
11/19/2008	H	T GD	1650	3	113	1	21	<b>29.877</b>
10/29/2008	S	S GD	1650	3	116	8		<b>30.080</b>

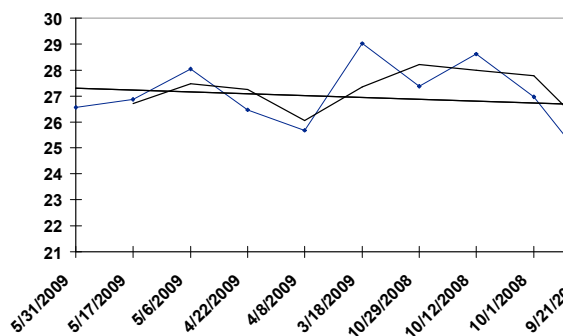


HV 09/23/2009 RACE: 7 1800 SURFACE: T Class: 3

MAN IN THE MIRROR

129 - AUS BAY 7YO G, (NKOMO - HABERDASHERY, )

Date	Trk	Surf	Dis (M)	Class	Wt	Fin	Layoff Days	TS
05/31/2009	S	T G	2000	3	130	13	14	26.552
05/17/2009	S	T GF	1800	3	121	12	11	26.877
05/06/2009	H	T G	2200	3	118	1	14	28.052
04/22/2009	H	T G	1650	3	125	12	14	26.456
04/08/2009	H	T G	1650	3	125	10	21	25.673
03/18/2009	H	T GD	1650	3	128	11	140	29.031
10/29/2008	S	S GD	1650	3	126	11	17	27.367
10/12/2008	S	T GF	1600	2	118	13	11	28.604
10/01/2008	S	T GF	1800	3	132	6	10	26.962
09/21/2008	S	T GF	1600	2	118	9		24.203

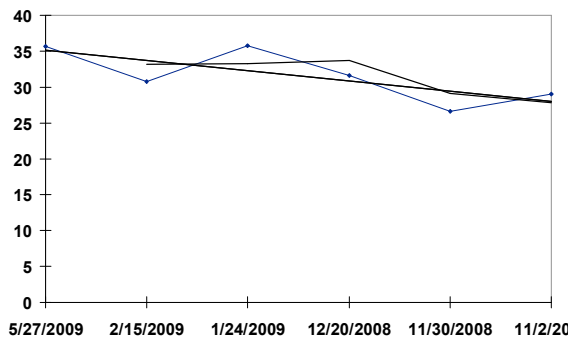


**HV** 09/23/2009 RACE: 7 1800 SURFACE: T Class: 3

**SLEEP WELL**

126 - IRE BAY 4YO C, (SADLER'S WELLS - PRAWN COCKTAIL, )

<u>Date</u>	<u>Trk</u>	<u>Surf</u>	<u>Dis (M)</u>	<u>Class</u>	<u>Wt</u>	<u>Fin</u>	<u>Layoff Days</u>	<u>TS</u>
05/27/2009	H	T Y	1800	2	116	7	101	<b>35.654</b>
02/15/2009	S	T GD	1800	HK	126	14	22	<b>30.748</b>
01/24/2009	S	T GD	1800	2	122	4	35	<b>35.767</b>
12/20/2008	S	T GF	1800	2	114	7	20	<b>31.636</b>
11/30/2008	S	T GF	1600	2	125	9	28	<b>26.567</b>
11/02/2008	S	T GD	1600	2	124	12		<b>28.990</b>

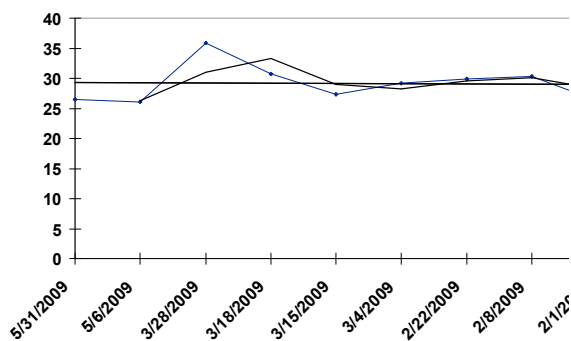


HV 09/23/2009 RACE: 7 1800 SURFACE: T Class: 3

THE GOODIES

121 - NZ CHESTNUT 7YO G, (SINGSPIEL - BUNCRANA, )

Date	Trk	Surf	Dis (M)	Class	Wt	Fin	Layoff Days	TS
05/31/2009	S	T G	2000	3	125	9	25	26.475
05/06/2009	H	T G	2200	3	120	9	39	26.107
03/28/2009	S	T GY	1800	3	122	4	10	35.899
03/18/2009	H	T GD	2200	3	121	1	3	30.710
03/15/2009	S	T GD	1600	3	115	12	11	27.303
03/04/2009	S	S GD	1650	3	113	8	10	29.161
02/22/2009	S	T GD	1600	3	122	12	14	29.924
02/08/2009	S	T GD	1600	3	125	10	7	30.285
02/01/2009	S	S GD	1650	3	118	11		26.282

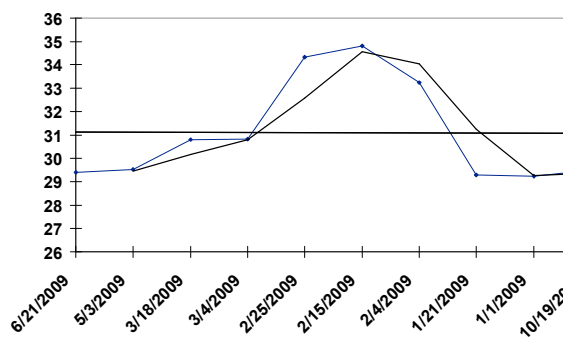


HV 09/23/2009 RACE: 7 1800 SURFACE: T Class: 3

VICTORY TREASURE

123 - NZ BAY 8YO G, (ZABEEL - ATTEMPTING, )

Date	Trk	Surf	Dis (M)	Class	Wt	Fin	Layoff Days	TS
06/21/2009	S	S GD	1650	3	124	9	49	29.389
05/03/2009	S	S GD	1650	3	127	7	46	29.525
03/18/2009	H	T GD	2200	3	121	7	14	30.788
03/04/2009	S	S GD	1650	3	119	4	7	30.819
02/25/2009	H	T GD	1800	3	130	4	10	34.334
02/15/2009	S	T GD	1800	3	130	5	11	34.807
02/04/2009	H	T GD	1800	3	122	1	14	33.241
01/21/2009	H	T GD	1650	3	125	10	20	29.280
01/01/2009	S	T GF	1600	3	128	6	74	29.249
10/19/2008	H	T GD	1650	3	127	4		29.492

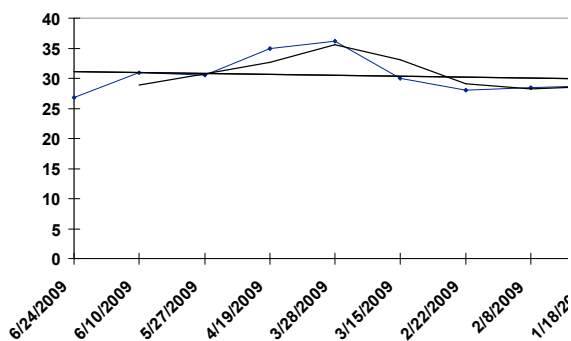


HV 09/23/2009 RACE: 7 1800 SURFACE: T Class: 3

LASKER

121 - AUS BAY 6YO G, (GALILEO - MISTY DAWN, )

Date	Trk	Surf	Dis (M)	Class	Wt	Fin	Layoff Days	TS
06/24/2009	H	T GF	1650	3	122	3	14	26.807
06/10/2009	H	T GF	1800	3	122	2	14	30.972
05/27/2009	H	T GY	1650	3	117	3	38	30.513
04/19/2009	H	T GY	1800	3	123	7	22	34.912
03/28/2009	S	T GY	1800	3	123	6	13	36.142
03/15/2009	S	T GD	1600	3	122	5	21	29.995
02/22/2009	S	T GD	1400	3	126	9	14	28.083
02/08/2009	S	T GD	1400	3	127	9	21	28.490
01/18/2009	S	T GD	1400	3	126	9		28.782

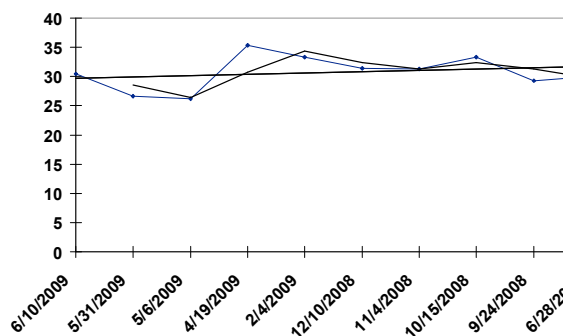


HV 09/23/2009 RACE: 7 1800 SURFACE: T Class: 3

FLORAL NIRVANA

118 - AUS BROWN 7YO G, (FUSAICHI PEGASUS - NOT ON FRIDAY,)

Date	Trk	Surf	Dis (M)	Class	Wt	Fin	Layoff Days	TS
06/10/2009	H	T GF	1800	3	125	7	10	30.480
05/31/2009	S	T G	2000	3	126	8	25	26.683
05/06/2009	H	T G	2200	3	123	5	17	26.194
04/19/2009	H	T GY	1800	3	130	9	74	35.335
02/04/2009	H	T GD	1800	3	127	4	56	33.364
12/10/2008	H	T GD	2200	3	133	6	36	31.360
11/04/2008	H	T GD	2200	3	127	2	20	31.301
10/15/2008	H	T GD	1800	3	131	3	21	33.343
09/24/2008	H	T GD	1800	3	127	10	88	29.335
06/28/2008	S	T S	2000	3	125	12		30.079

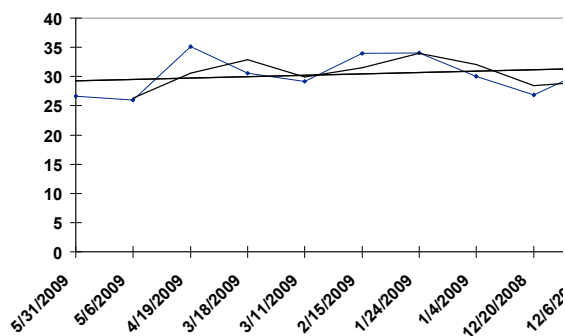


**HV** 09/23/2009 RACE: 7 1800 SURFACE: T Class: 3

**ROYAL PEGASUS**

120 - NZ BROWN 5YO G, (Don Eduardo - Rubiton's Best, )

<u>Date</u>	<u>Trk</u>	<u>Surf</u>	<u>Dis (M)</u>	<u>Class</u>	<u>Wt</u>	<u>Fin</u>	<u>Layoff Days</u>	<u>TS</u>
05/31/2009	S	T G	2000	3	126	12	25	<b>26.658</b>
05/06/2009	H	T G	2200	3	119	4	17	<b>25.946</b>
04/19/2009	H	T GY	1800	3	128	3	32	<b>35.168</b>
03/18/2009	H	T GD	2200	3	119	4	7	<b>30.530</b>
03/11/2009	H	T GD	1650	3	121	12	24	<b>29.214</b>
02/15/2009	S	T GD	1800	3	133	12	22	<b>33.906</b>
01/24/2009	S	T GD	1800	2	119	8	20	<b>34.036</b>
01/04/2009	S	T GD	1600	2	118	7	15	<b>29.983</b>
12/20/2008	S	T GF	1800	2	118	12	14	<b>26.837</b>
12/06/2008	S	T GD	1400	2	127	13		<b>31.435</b>

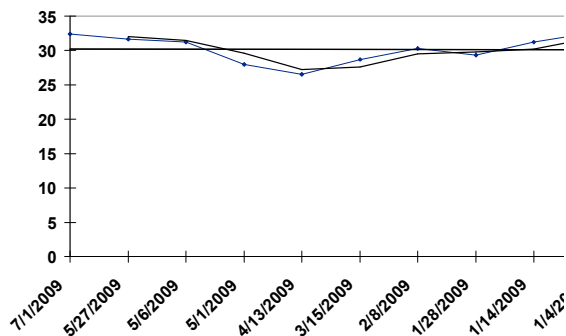


HV 09/23/2009 RACE: 7 1800 SURFACE: T Class: 3

VISIONARIO

114 - IRE BAY / BROW 5YO G, (SPINNING WORLD - VISIONNAIRE, )

Date	Trk	Surf	Dis (M)	Class	Wt	Fin	Layoff Days	TS
07/01/2009	S	T GF	1800	4	133	3	35	32.348
05/27/2009	H	T GY	2200	4	132	3	21	31.701
05/06/2009	H	T G	1800	4	123	3	5	31.210
05/01/2009	S	T GF	2000	4	125	1	18	27.944
04/13/2009	S	T GF	1600	4	125	2	29	26.499
03/15/2009	S	T GD	1600	4	125	4	35	28.675
02/08/2009	S	T GD	1400	4	127	12	11	30.280
01/28/2009	S	T GD	1400	4B	123	5	14	29.284
01/14/2009	H	T GD	1200	4	129	11	10	31.185
01/04/2009	S	S FT	1200	4	133	9		32.558



HV

09/23/2009

RACE: 8

1650

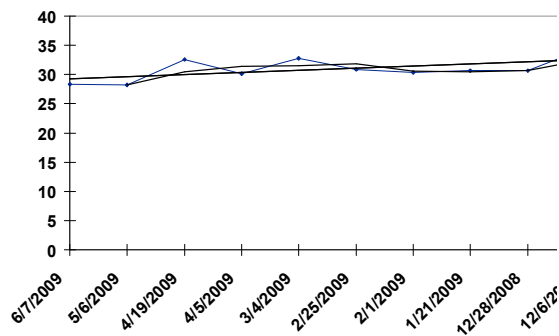
SURFACE: T

Class: 2

WATCH WHAT HAPPENS

133 - FR BAY 6YO G, (STRAVINSKY - EATON PLACE, )

Date	Trk	Surf	Dis (M)	Class	Wt	Fin	Layoff Days	TS
06/07/2009	S	S GD	1650	1	123	9	32	28.278
05/06/2009	H	T G	1650	1	129	8	17	28.266
04/19/2009	H	T GY	1650	1	125	7	14	32.591
04/05/2009	S	T G	1400	1	133	9	32	30.170
03/04/2009	S	S GD	1650	2	133	2	7	32.756
02/25/2009	H	T GD	1650	1	129	5	24	30.847
02/01/2009	S	S GD	1650	1	119	1	11	30.310
01/21/2009	H	T GD	1650	2	127	1	24	30.655
12/28/2008	S	S GD	1650	1	121	11	22	30.623
12/06/2008	S	S GD	1200	2	128	9		34.451

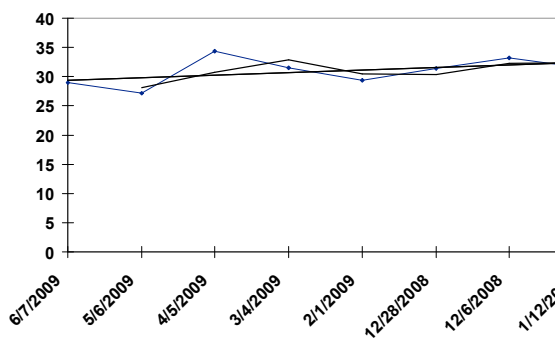


HV 09/23/2009 RACE: 8 1650 SURFACE: T Class: 2

**GREAT ACHIEVEMENT**

129 - AUS BAY 8YO G, (DANEHILL - TAMARIND TREE, )

<u>Date</u>	<u>Trk</u>	<u>Surf</u>	<u>Dis (M)</u>	<u>Class</u>	<u>Wt</u>	<u>Fin</u>	<u>Layoff Days</u>	<u>TS</u>
06/07/2009	S	S GD	1650	1	119	7	32	<b>28.999</b>
05/06/2009	H	T G	1650	1	127	6	31	<b>27.158</b>
04/05/2009	S	S GD	1200	1	133	5	32	<b>34.345</b>
03/04/2009	S	S GD	1650	2	133	4	31	<b>31.511</b>
02/01/2009	S	S GD	1650	1	120	2	35	<b>29.399</b>
12/28/2008	S	S GD	1650	1	126	4	22	<b>31.364</b>
12/06/2008	S	S GD	1200	2	128	10	329	<b>33.192</b>
01/12/2008	S	S GD	1650	2	132	4		<b>31.531</b>

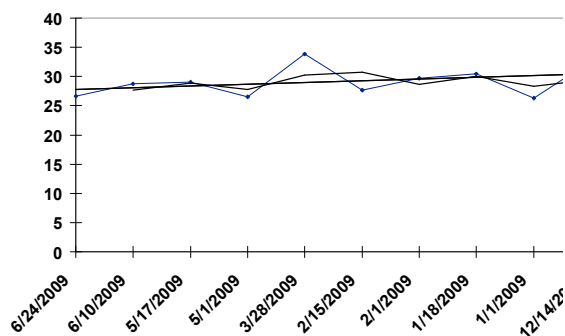


HV 09/23/2009 RACE: 8 1650 SURFACE: T Class: 2

**INTERCHINA STAR**

128 - NZ BAY 5YO G, (POSTPONED - ILLUMINATE, )

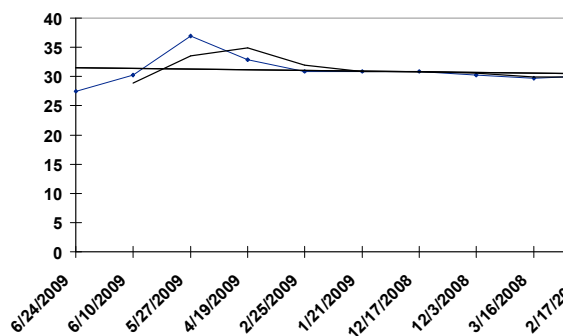
Date	Trk	Surf	Dis (M)	Class	Wt	Fin	Layoff Days	TS
06/24/2009	H	T GF	1650	2	116	1	14	26.584
06/10/2009	H	T GF	1650	2	116	3	24	28.768
05/17/2009	S	T GF	1600	2	112	3	16	29.030
05/01/2009	S	T GF	1400	1	112	7	34	26.519
03/28/2009	S	T GY	1600	2	121	6	41	33.854
02/15/2009	S	T GD	1600	2	126	7	14	27.664
02/01/2009	S	T GD	1600	2	116	2	14	29.729
01/18/2009	S	T GD	1600	HK	126	10	17	30.402
01/01/2009	S	T GF	1400	2	122	5	18	26.293
12/14/2008	S	T GD	1600	1	117	9		32.725



**HV** 09/23/2009 RACE: 8 1650 SURFACE: T Class: 2

**FLUKE** 124 - IRE BAY 5YO G, (DAGGERS DRAWN - LEAR'S CROWN, )

<u>Date</u>	<u>Trk</u>	<u>Surf</u>	<u>Dis (M)</u>	<u>Class</u>	<u>Wt</u>	<u>Fin</u>	<u>Layoff Days</u>	<u>TS</u>
06/24/2009	H	T GF	1650	2	119	7	14	<b>27.529</b>
06/10/2009	H	T GF	1650	2	122	2	14	<b>30.233</b>
05/27/2009	H	T Y	1800	2	121	2	38	<b>36.877</b>
04/19/2009	H	T GY	1650	3	131	2	53	<b>32.902</b>
02/25/2009	H	T GD	1650	3	132	3	35	<b>30.909</b>
01/21/2009	H	T GD	1650	3	130	1	35	<b>30.879</b>
12/17/2008	H	T GD	1650	3	127	8	14	<b>30.850</b>
12/03/2008	H	T GD	1650	2	110	7	262	<b>30.221</b>
03/16/2008	S	T GD	1400	2	120	12	28	<b>29.668</b>
02/17/2008	S	T GD	1400	2	120	13		<b>30.159</b>

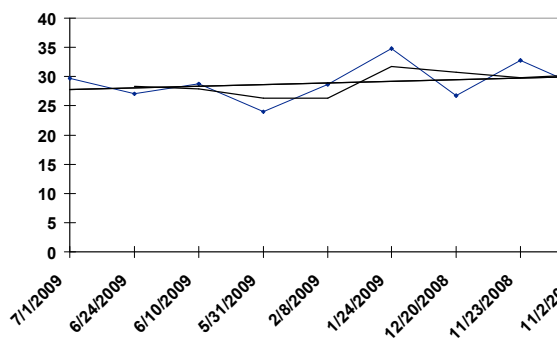


HV 09/23/2009 RACE: 8 1650 SURFACE: T Class: 2

**BROM BROM**

125 - AUS BROWN 5YO G, (DELAGO BROM - EASY DOES IT,)

Date	Trk	Surf	Dis (M)	Class	Wt	Fin	Layoff Days	TS
07/01/2009	S	T GF	1600	2	133	4	7	29.712
06/24/2009	H	T GF	1650	2	125	5	14	27.017
06/10/2009	H	T GF	1650	2	113	1	10	28.750
05/31/2009	S	T G	1200	2	114	8	112	23.929
02/08/2009	S	T GD	1400	2	110	11	15	28.651
01/24/2009	S	T GD	1800	2	125	9	35	34.786
12/20/2008	S	T GF	1800	2	120	10	27	26.790
11/23/2008	S	T GD	1600	HK	123	8	21	32.782
11/02/2008	S	T GD	1600	2	125	9		27.956

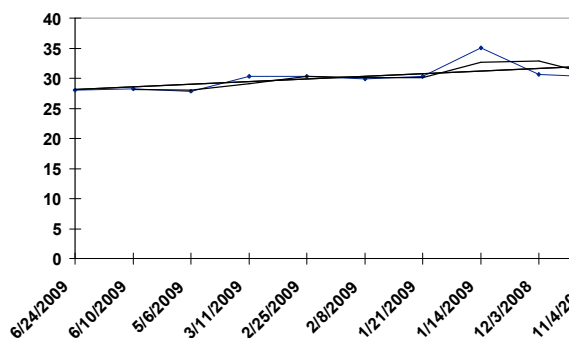


**HV** 09/23/2009 RACE: 8 1650 SURFACE: T Class: 2

**WINNING REWARD**

121 - IRE CHESTNUT 8YO G , (CADEAUX GENEREUX - FERNANDA, )

<u>Date</u>	<u>Trk</u>	<u>Surf</u>	<u>Dis (M)</u>	<u>Class</u>	<u>Wt</u>	<u>Fin</u>	<u>Layoff Days</u>	<u>TS</u>
06/24/2009	H	T GF	1650	2	126	10	14	<b>28.030</b>
06/10/2009	H	T GF	1650	2	126	6	35	<b>28.248</b>
05/06/2009	H	T G	1650	1	115	3	56	<b>27.804</b>
03/11/2009	H	T GD	1650	1	114	2	14	<b>30.287</b>
02/25/2009	H	T GD	1650	1	114	4	17	<b>30.346</b>
02/08/2009	S	T GD	1400	2	120	4	18	<b>29.916</b>
01/21/2009	H	T GD	1650	2	122	8	7	<b>30.316</b>
01/14/2009	H	T GD	1800	2	130	7	42	<b>35.045</b>
12/03/2008	H	T GD	1650	2	131	10	29	<b>30.666</b>
11/04/2008	H	T GD	1800	1	124	5		<b>30.201</b>

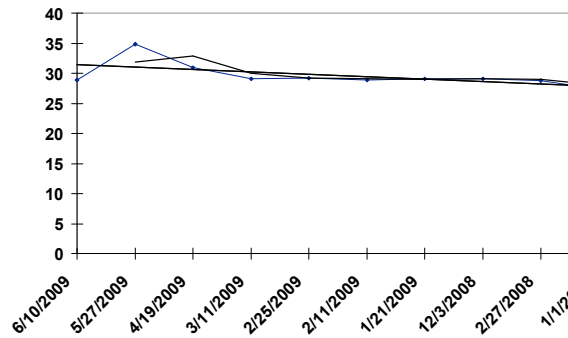


**HV** 09/23/2009 RACE: 8 1650 SURFACE: T Class: 2

**CONGRATS**

122 - NZ BAY 7YO G, (ISTIDAAD - ABITA BLUE, )

<u>Date</u>	<u>Trk</u>	<u>Surf</u>	<u>Dis (M)</u>	<u>Class</u>	<u>Wt</u>	<u>Fin</u>	<u>Layoff Days</u>	<u>TS</u>
06/10/2009	H	T GF	1650	2	124	4	14	<b>28.877</b>
05/27/2009	H	T Y	1800	2	128	9	38	<b>34.889</b>
04/19/2009	H	T GY	1650	1	111	2	39	<b>30.973</b>
03/11/2009	H	T GD	1650	1	114	5	14	<b>29.078</b>
02/25/2009	H	T GD	1650	1	114	2	14	<b>29.226</b>
02/11/2009	H	T GD	1800	2	118	4	21	<b>28.916</b>
01/21/2009	H	T GD	1650	2	120	6	49	<b>29.108</b>
12/03/2008	H	T GD	1650	2	121	2	280	<b>29.102</b>
02/27/2008	H	T GD	1650	2	119	4	57	<b>28.756</b>
01/01/2008	S	T GF	1600	2	118	13		<b>27.331</b>

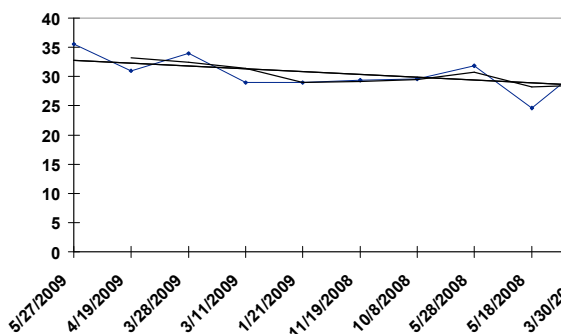


HV 09/23/2009 RACE: 8 1650 SURFACE: T Class: 2

**DORDENMA**

121 - NZ CHESTNUT 7YO G, (STARK SOUTH - SIMPLY SALLY, )

Date	Trk	Surf	Dis (M)	Class	Wt	Fin	Layoff Days	TS
05/27/2009	H	T Y	1800	2	125	12	38	35.555
04/19/2009	H	T GY	1650	1	110	5	22	30.936
03/28/2009	S	T GY	1600	2	125	11	17	33.988
03/11/2009	H	T GD	1650	1	118	6	49	28.928
01/21/2009	H	T GD	1650	2	114	2	63	28.966
11/19/2008	H	T GD	1650	3	129	1	42	29.363
10/08/2008	H	T GD	1650	3	133	2	133	29.618
05/28/2008	H	T GD	1650	3	129	10	10	31.857
05/18/2008	S	T GF	1600	2	113	11	49	24.563
03/30/2008	S	T GD	1600	2	111	3		32.597

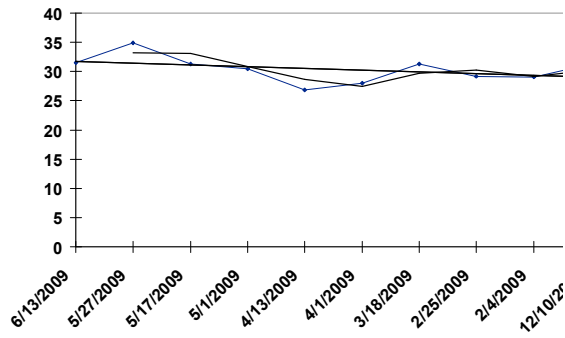


HV 09/23/2009 RACE: 8 1650 SURFACE: T Class: 2

REAL SPECIAL

120 - NZ BAY 5YO G, (VAN NISTELROOY - MORE DIAMONDS, )

Date	Trk	Surf	Dis (M)	Class	Wt	Fin	Layoff Days	TS
06/13/2009	S	T G	1800	1	110	7	17	31.463
05/27/2009	H	T Y	1800	2	122	3	10	34.858
05/17/2009	S	T GF	1800	3	133	8	16	31.270
05/01/2009	S	T GF	2400	HK	111	8	18	30.417
04/13/2009	S	T GF	1800	1	115	6	12	26.809
04/01/2009	H	T G	2200	2	118	1	14	28.046
03/18/2009	H	T GD	2200	3	133	3	21	31.292
02/25/2009	H	T GD	1650	3	126	4	21	29.203
02/04/2009	H	T GD	1650	3	133	12	56	29.085
12/10/2008	H	T GD	2200	3	131	2		31.340

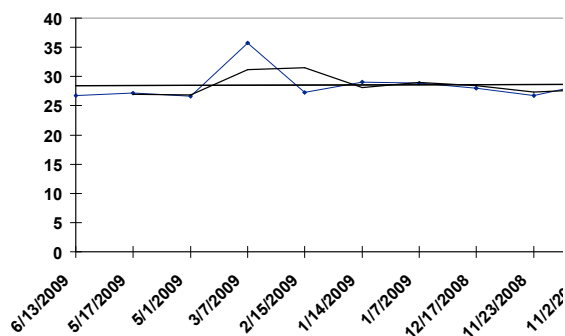


HV 09/23/2009 RACE: 8 1650 SURFACE: T Class: 2

BLUE SKY

118 - AUS BAY 5YO G, (BEL ESPRIT - AQUATINT, )

Date	Trk	Surf	Dis (M)	Class	Wt	Fin	Layoff Days	TS
06/13/2009	S	T G	1400	3	130	8	27	26.698
05/17/2009	S	T GF	1600	2	117	6	16	27.200
05/01/2009	S	T GF	1400	1	114	2	55	26.582
03/07/2009	S	T GY	1800	1	111	11	20	35.795
02/15/2009	S	T GD	1600	2	120	4	32	27.255
01/14/2009	H	T GD	1650	3	129	1	7	29.021
01/07/2009	H	T GD	1650	3	129	8	21	28.878
12/17/2008	H	T GD	1200	3	131	4	24	27.997
11/23/2008	S	T GD	1200	3	129	2	21	26.707
11/02/2008	S	T GD	1400	3	129	10		28.825

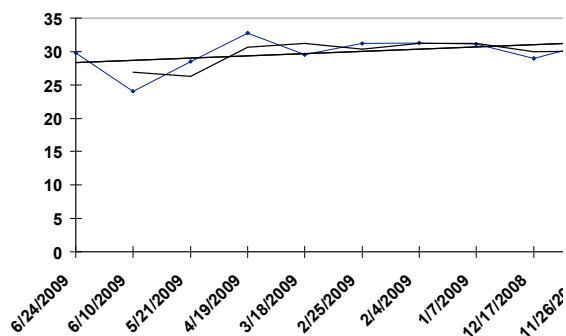


**HV** 09/23/2009 RACE: 8 1650 SURFACE: T Class: 2

**NOBLE MAN**

116 - GB BAY 9YO G, (CADEAUX GENEREUX - SHOWERY, )

<u>Date</u>	<u>Trk</u>	<u>Surf</u>	<u>Dis (M)</u>	<u>Class</u>	<u>Wt</u>	<u>Fin</u>	<u>Layoff Days</u>	<u>TS</u>
06/24/2009	H	T GF	1650	2	119	3	14	<b>29.800</b>
06/10/2009	H	T GF	1000	2	119	3	20	<b>24.037</b>
05/21/2009	H	T GF	1200	2	116	2	32	<b>28.514</b>
04/19/2009	H	T GY	1200	1	117	4	32	<b>32.807</b>
03/18/2009	H	T GD	1000	2	118	7	21	<b>29.490</b>
02/25/2009	H	T GD	1200	1	112	2	21	<b>31.196</b>
02/04/2009	H	T GD	1000	2	122	7	28	<b>31.275</b>
01/07/2009	H	T GD	1200	2	121	2	21	<b>31.114</b>
12/17/2008	H	T GD	1000	1	111	3	21	<b>28.944</b>
11/26/2008	H	T GD	1200	2	123	7		<b>31.207</b>

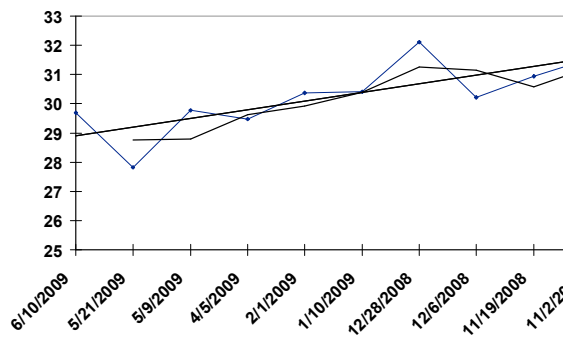


HV 09/23/2009 RACE: 8 1650 SURFACE: T Class: 2

WHATABOB

112 - IRE BAY 9YO H, (INDIAN RIDGE - MA N'IEME BICHE, )

Date	Trk	Surf	Dis (M)	Class	Wt	Fin	Layoff Days	TS
06/10/2009	H	T GF	1650	2	112	12	20	29.683
05/21/2009	H	T GF	1650	3	124	2	12	27.821
05/09/2009	S	T G	1400	3	127	13	34	29.776
04/05/2009	S	T G	1400	1	114	12	63	29.468
02/01/2009	S	S GD	1650	1	110	7	22	30.360
01/10/2009	S	T GD	1400	2	121	9	13	30.413
12/28/2008	S	S GD	1650	1	115	2	22	32.100
12/06/2008	S	T GD	1400	2	123	12	17	30.221
11/19/2008	H	T GD	1650	3	133	4	17	30.944
11/02/2008	S	T GD	1600	2	121	10		31.558

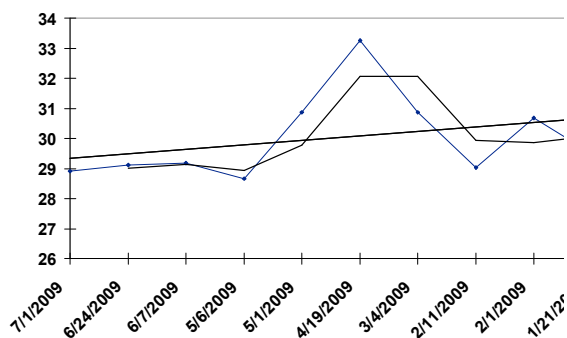


HV 09/23/2009 RACE: 8 1650 SURFACE: T Class: 2

SILVER SUN

130 - AUS BAY 8YO G, (SCENIC - TIMELESS TENBY,)

Date	Trk	Surf	Dis (M)	Class	Wt	Fin	Layoff Days	TS
07/01/2009	S	T GF	1600	1	111	10	7	28.903
06/24/2009	H	T GF	1650	2	128	4	17	29.108
06/07/2009	S	S GD	1650	1	113	2	32	29.178
05/06/2009	H	T G	1650	1	113	11	5	28.665
05/01/2009	S	T GF	2400	HK	110	11	12	30.875
04/19/2009	H	T GY	1650	1	108	3	46	33.263
03/04/2009	S	S GD	1650	2	109	1	21	30.869
02/11/2009	H	T GD	1800	2	116	9	10	29.027
02/01/2009	S	S GD	1650	1	103	5	11	30.687
01/21/2009	H	T GD	1650	2	128	9		29.477

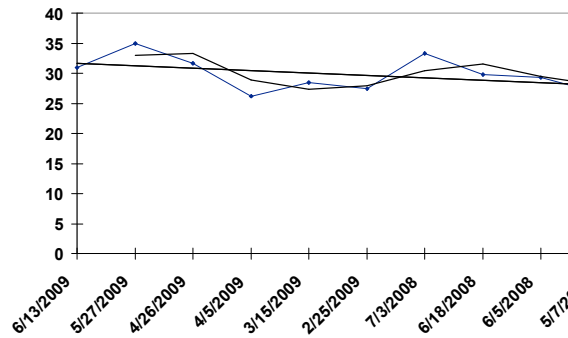


**HV** 09/23/2009 RACE: 8 1650 SURFACE: T Class: 2

**TOM'S SIX**

117 - AUS BAY 7YO G, (BLACKFRIARS - VAINQUER, )

<u>Date</u>	<u>Trk</u>	<u>Surf</u>	<u>Dis (M)</u>	<u>Class</u>	<u>Wt</u>	<u>Fin</u>	<u>Layoff Days</u>	<u>TS</u>
06/13/2009	S	T G	1800	1	113	10	17	<b>30.933</b>
05/27/2009	H	T Y	1800	2	128	11	31	<b>34.990</b>
04/26/2009	S	T Y	1600	2	123	13	21	<b>31.600</b>
04/05/2009	S	T G	1400	1	124	13	21	<b>26.160</b>
03/15/2009	S	T GD	1400	2	129	10	18	<b>28.466</b>
02/25/2009	H	T GD	1200	1	124	9	237	<b>27.448</b>
07/03/2008	H	T GD	1800	2	122	3	15	<b>33.310</b>
06/18/2008	H	T S	1650	2	127	11	13	<b>29.772</b>
06/05/2008	H	T GD	1650	2	125	4	29	<b>29.300</b>
05/07/2008	H	T GF	1650	2	125	2		<b>26.743</b>



HV 09/23/2009

	<u>TODOS STAT</u> <u>LAST RACE</u>	<u>YOUR CHOICE</u>
GO STITCH	29.020	_____
FAST GO	25.411	_____
NOT QUITE PERFECT	27.828	_____
SUPER SPECIAL	23.873	_____
DAILY DOUBLE	27.327	_____
PERFECT ATHLETE	28.104	_____
CHAIN WIN	28.408	_____
TAKE IT EASY	27.408	_____
OPTIC KING	28.208	_____
MAGIC PRACTITIONER	26.494	_____
BLUE SAINT	33.364	_____
ALIVE AND KICKING	26.150	_____
HAPPY SUNDAY	26.161	_____
SCOOT DA LOOT	30.207	_____

HV 09/23/2009

	<u>TODOS STAT</u> <u>LAST RACE</u>	<u>YOUR CHOICE</u>
CENTURY MOLLY	26.292	_____
GOLDEN OPPORTUNITY	26.724	_____
SURE GAIN	26.797	_____
DECENT FELLOW	30.757	_____
SMART CODE	27.960	_____
FRAMES DEPOT	27.511	_____
JOYFUL YEARS	26.667	_____
FORTUNE GALLOP	26.404	_____
BAUHINIA	27.799	_____
EPEE DE HUA	26.713	_____
RISING WIN	27.036	_____
VITALITY CHAMP	30.348	_____
MYSTERIOUS	27.093	_____

HV 09/23/2009

TODOS STAT  
LAST RACE

YOUR CHOICE

KARBRIDGE	32.185	_____
ASIAN CITRUS	27.964	_____
MASTER RIO	28.213	_____
CHINA HERO	26.255	_____
CHEERFUL CITY	26.306	_____
CLASSA SUPREME	28.153	_____
MARVELLOUS	29.325	_____
HAPPEE GIFT	24.579	_____
SUGAR ON TOP	25.696	_____
TATTENHALL DELIGHT	27.973	_____
FAIRWOOD CROWN	27.356	_____
OWNERS LAD	27.330	_____
KING POWER	27.729	_____
SOLAR UP	25.774	_____

HV 09/23/2009

TODOS STAT  
LAST RACE

YOUR CHOICE

GALLANT MASTER	31.213	_____
DASH AHEAD	35.955	_____
EVER KING	31.955	_____
FANTASTIC DANCER	26.932	_____
DASHING THUNDER	28.409	_____
SUPER SURPRISE	30.480	_____
LUCKY MONEY	25.387	_____
BATURO	28.677	_____
JOLLY WONGCHOY	32.324	_____
SAMBUOYANT	32.175	_____
WONG'S FAVOURITE	27.752	_____
GRAND GENERAL	26.973	_____
MASTER DREAMER	26.726	_____

HV 09/23/2009

	<u>TODOS STAT</u> <u>LAST RACE</u>	<u>YOUR CHOICE</u>
PACIFIC ALLIANCE	26.022	_____
ABLE DRAGON	26.802	_____
ELITE FORTUNE	27.688	_____
BREAKING POINT	30.655	_____
MAINLAND SHUTTLE	25.494	_____
BULB TREASURE	30.911	_____
HIGH NOTE	25.789	_____
SUDDEN SPLENDOR	31.598	_____
AMITYSHIP	26.397	_____
VICTORY MASCOT	32.281	_____
FLORAL IMAGE	27.835	_____
ROCKET AND GOLD	24.677	_____
NAMJONG FIGHTERS	27.601	_____
MINGS' HERO	26.490	_____

HV 09/23/2009

TODOS STAT  
LAST RACE

YOUR CHOICE

GOOD TO GO	27.668	_____
LONGWAH RISING	30.335	_____
TEAM WORK	27.801	_____
VAUGIRARD	25.736	_____
KEEN SOUL	27.192	_____
RAINBOW SEEKER	26.492	_____
SHY BALDY	28.675	_____
LOYAL ARMY	27.549	_____
GOOD STRIKE	23.772	_____
K-JACK	27.304	_____
THUNDER FLASH	28.991	_____
BLEDISLOE	27.730	_____

HV 09/23/2009

	<u>TODOS STAT</u> <u>LAST RACE</u>	<u>YOUR CHOICE</u>
FAT DRAGON	34.553	_____
PRINCE KALAMOUN	32.707	_____
TOP HONOR	34.991	_____
LOCAL POWER	25.860	_____
WARM EMBRACES	27.697	_____
MAN IN THE MIRROR	26.552	_____
SLEEP WELL	35.654	_____
THE GOODIES	26.475	_____
VICTORY TREASURE	29.389	_____
LASKER	26.807	_____
FLORAL NIRVANA	30.480	_____
ROYAL PEGASUS	26.658	_____
VISIONARIO	32.348	_____

HV 09/23/2009

	<u>TODOS STAT</u> <u>LAST RACE</u>	<u>YOUR CHOICE</u>
WATCH WHAT HAPPENS	28.278	_____
GREAT ACHIEVEMENT	28.999	_____
INTERCHINA STAR	26.584	_____
FLUKE	27.529	_____
BROM BROM	29.712	_____
WINNING REWARD	28.030	_____
CONGRATS	28.877	_____
DORDENMA	35.555	_____
REAL SPECIAL	31.463	_____
BLUE SKY	26.698	_____
NOBLE MAN	29.800	_____
WHATABOB	29.683	_____
SILVER SUN	28.903	_____
TOM'S SIX	30.933	_____